



Fiberglass

Door Slabs

Neulite Flush Glazed

SG10 | WG12

With simple and aesthetically clean glass beadings, Neulite Flush Glazed doors are designed to complement today's contemporary home decors. The smooth white shaker-style beading allows for a 1" standard glass thickness and all standard size glass inserts, whether decorative, privacy, textured or completely clear. They can be used as an elegant front entrance or an escape to a backyard garden oasis.



Smooth White Neulite Detail

Fiberglass | Steel

Door Slabs

Flush Doors with Insert

SG00 | WG00 | ED00

The 24-gauge steel, and the fiberglass slab is cut out in manufacturing to accept the Evolve® insert with glass.

The high-performance Evolve® frame material provides superior rigidity and eliminates bothersome squeeze-out through the use of a compression foam tape seal. This latest innovation reduces scalloping, corner flare, and warping. The Evolve® HP frame does not require finishing, but can be painted to match your door colour.



Evolve® High Performance Frame

Door Slabs

Fiberglass

25 **YEAR**
Limited
Manufacturer's
Warranty

BUILT FOR THE
Canadian Climate



Exceptional Security

Our full-length steel reinforced wood lock block offers exceptional security while allowing a range of hardware mounting options.

Energy Efficiency

Filled with an insulating core of 100% CFC-free polyurethane foam, providing an excellent R rating, while bonding the two door skins together.

Performance

Rigid structure prevents bowing and warping in extreme temperatures. The fiberglass skins are resistant to dents, dings, splintering, and corrosion. They are very easy to keep clean.

Completely Waterproof

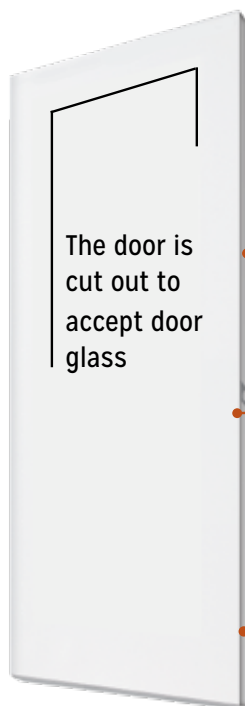
Our full-length composite stiles and rails provide complete waterproofing for the door's insulation. The composite materials will not splinter or delaminate, and boasts twice the screw holding capacity of wood-edge doors.

Steel Slabs

Novatech

10 **YEAR** Limited
Manufacturer's
Warranty

A popular choice for Canadian home buyers, our 24-gauge steel doors feature triple-shadowed panel embossments for greater detail. The white N600 Polytex finish carries a 10 year warranty, with the smooth, ready to paint finish ready to accept the paint color of your choosing.



Durability

Door skins interlock with the stile, providing additional support to reduce delamination and stretching.

Strength and Security

16" wood lock block provides strength and security while accommodating double bore lockset/deadbolt.

Energy Efficient

Filled with an insulating core of 100% CFC-free polyurethane foam, providing better energy ratings than a standard styrene core product.

Pre-Finishing Options

Smooth white pre-pigmented fiberglass doors have a warm white finish to match the composite frame and require no painting. The doors will accept an array of paint colours to match the decor of your home.

Woodgrain textured fiberglass doors have a realistic rich appearance requiring paint or stain.

Steel doors are supplied with a N600 Polytex finish, requiring no additional paint to achieve a 10 year limited warranty. Polytex white is cool white while Madero's composite frames are warm white. To achieve a uniform appearance, painting will be required.



Door Frame Specifications



Brickmould Options

5/8" Slimline Aluminum

5/8" Slimline aluminum brickmould comes standard with an integral nailing fin and is versatile for both renovation and new construction.



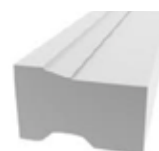
Black



Pure White

#180 Step

Standard option is wood or composite #180 step brickmould. Snaplock nailing fin is added on all composite units.



SnapLock Nailing Fin (Composite only)

Incorporating a hinge-style design, Madero's SnapLock nailing fin snaps into place for new home construction or can be scored and trimmed if not required.

Jamb Options

Madero Artisan door frame systems are constructed of wood or composite jamb - smooth white or textured. Available in jamb depth of 4-9/16", 6-9/16", 8-9/16" or custom.

Aluminum Jamb Cladding

Cladding in black or white is available to exterior or jamb surface - inswing units only.



Wood

Kiln dried, primed finger-joint pine double primed for quality performance and ease of painting. Wood frame requires paint on all exposed surfaces within 45 days of purchase.



Composite

- Woodgrain textured or pre-pigmented smooth white frame components are a blend of PVC and wood fiber composite substrate.
- Composite will not discolour, absorb moisture, splinter or rot.
- Smooth white composite does not require paint while woodgrain composite is supplied in its raw almond finish, requiring paint or stain to achieve a realistic, rich appearance.
- Limited lifetime warranty.



MAINTENANCE FREE
DOESN'T REQUIRE PAINT



DESIGNED FOR THE
CANADIAN CLIMATE



SECURE AGAINST
FORCED ENTRY

Door Frame Specifications



Z-Series Inswing Articulating Sill® and Sealing System

- **Superior Performance**

Z-AC cap sill never needs adjustment, automatically adjusting for a lasting seal against leak and air infiltration.

- **Sealing System**

Gaskets are provided to give an additional seal and to eliminate caulking. Matching corner pads are factory installed to seal out air and moisture. Compression weatherstrip seals tight when the door is closed and expands when open. The Z-AC door bottom is adhered to the door forming a tight seal every time.

- **Additional Protection**

Sills are provided with sill and cap covers to prevent damage during installation.



CERTIFIED & TESTED

To meet the stringent NAFS requirements for doors in a new home construction, all Endura door components are certified and tested.



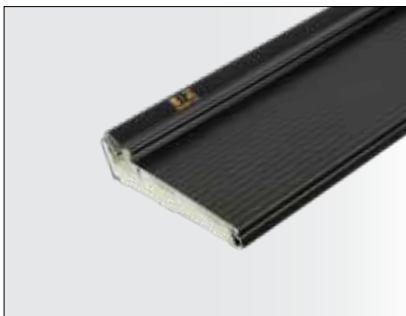
Z-AC Door Bottom

The Z-AC Door Bottom delivers enhanced protection against air and water infiltration, forming a tight seal every time. Z-AC Door Bottoms seal without caulk for easy assembly and lasting performance.



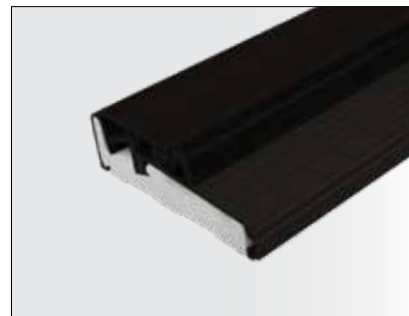
Simple Solutions® Corner Pad Weatherstripping

The Simple Solution Corner Pad seals out air and moisture. Compression weatherstrip seals tight when the door is closed and expands when opened, providing a long-lasting weather tight solution.



Z-Series Inswing Articulating Sill®

Madero Artisan door systems are provided with black caps and black anodized sill decks.



Z-Series Outswing Bumper Sill®

Madero Artisan door systems are provided with black caps and black anodized sill decks.