

# ARTISANDOORS



**EXTERIOR DOOR SYSTEMS | INTERIOR DOOR SYSTEMS | COMMERCIAL | HARDWARE**



# BUILT FOR THE CANADIAN CLIMATE



## Make Your Home More Energy Efficient

Energy efficient choices can save families roughly a third on their energy bills. When installed correctly, the Madero Artisan collection door systems can meet Energy Star thermal performance standards as defined by the US Department of Energy (DOE) and Natural Resources Canada (NR-Can).

ENERGY STAR® certified products: Quality guaranteed



## NAFS

### A New Standard in Doors

MP5-NAFS The National Building Code of Canada has changed its requirements for the side-hinged door industry. The new standards require manufacturers to conduct rigorous structural, air and water testing of door assemblies in accordance with the North American Fenestration Standard (NAFS), AAMA / WDMA / CSA 101 / I.S.2 / A440. Madero Artisan Entry Door Systems are skillfully manufactured, tested and labelled in accordance with these standards.

# SECURITY. PERFORMANCE. STANDARD.



PanoLock+ is the first and only multi-point lock that works with a wide variety of off-the-shelf hardware, including electronic deadbolts! That's affordable security and performance for every entry door.

## Protect Your Home. Preserve Your Style.

Multi-point locks provide extra security and performance for entry doors by adding two additional locking points in addition to your deadbolt. These extra points provide protection on multiple levels: deflecting impact during attempted break ins and forming a more perfect seal against the elements by pulling the door into alignment.





### From The Garden Patio Collection

*Single-hinged Garden Patio Doors with Frosted glass,  
left hand outswing, pre-finished in Colony.*

Madero door units are manufactured with 24 gauge steel, smooth white fiberglass or textured fiberglass slabs. Prehung in frame options of wood, white composite or textured composite partnered with a bronze sill and weather-tight seals.

Simply decide the design and products that work best for your home, select your door size, jamb depth, door handing and if required, complementary glass. It is that simple.



## Table of Contents

2024 - 2025

5	<b>Design Your Madero Door</b>
6	Single Door & Panelled Sidelite Configuration
8	Single Door & Direct Glazed Sidelite Configuration
10	<b>Garden Patio Doors</b>
14	<b>Larson Storm Doors</b>
16	<b>Choose Your Door Design</b>
18	Panelled Teak Fiberglass
20	Panelled Mahogany Fiberglass
22	Panelled Steel
24	Decorative Accents
24	4 Lite   Narrow Lite Neulite Fiberglass
28	Narrow Lite Steel
30	3 Lite
32	Craftsman Steel
34	Craftsman Classic   Craftsman Contemporary
36	3/4 Lite   3/4 Lite Neulite
38	1/2 Lite
39	Flush Door   One Lite
40	Full Lite Neulite Fiberglass
42	Spotlights
46	<b>Choose Your Door Glass</b>
48	Spotlights
55	Textured Glass
56	Decorative Glass
72	Wrought Iron
74	Silkscreen Glass
75	V-Groove
82	<b>Hardware Options</b>
92	<b>Door Specifications</b>
98	<b>Pre-Finishing Options</b>
100	<b>Product Measurements &amp; Checklists</b>



*Full Lite with panelled sidelite pre-finished in Black, shown with Mist Glass.*



# Design

## Your Madero Door

### Handcrafted. Refined.

The Artisan Series by Madero is comprised of handcrafted door systems to suit your home. Inswing or outswing? Left hand or right hand? 2/8 (32"), 2/10 (34"), 3/0 (36") or custom width? Jamb depth of 4-9/16, 6-9/16, 8-9/16 or custom? Hardware prep? Choose from the designs in this booklet, from the product selection shown and enjoy the process!

### Single Door

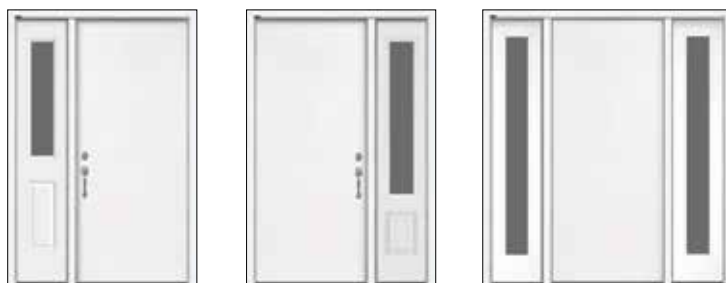
The options are endless for single opening units. Choose from door and glass designs featured within this catalogue. Perfect for all openings within your home.



(Viewing from the exterior)

### Panelled Sidelite

Sidelites provide a statement by maximizing the beauty of your front entrance. Available in a fixed configuration - with glass size of 1/2, 3/4 or full height.



Single with left  
1/2 Lite sidelite

Single with right  
3/4 Lite sidelite

Single with two  
Full Lite sidelites



## Decorative Accents

*Vog 1 Satin Nickel Accents with full lite Frosted sidelite and transom. Pre-finished in Stone. MegaTek Collection 60" ladder pull in Stainless Steel.*

# Design

your Madero Door

## Direct Glazed Sidelites & Transoms

Glass extends edge to edge, with no need for a sidelite panel. Direct glazed sidelites and transom provide full unobscured glass coverage. Pair any single door system with one or two direct glazed sidelites and/or transom. Choose from Frosted or Clear Low-E glass options.

### Sidelite and Transom Glass Options



Frosted



Clear Low-E

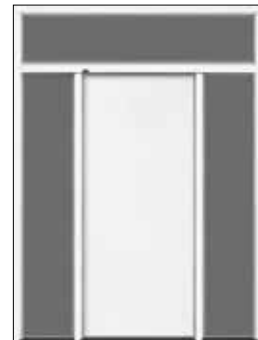
Additional glass options can be found throughout the brochure, and on [Madero.ca](http://Madero.ca)



Single with left sidelite



Single with right sidelite



Single with two sidelites

***Shown with optional transom, viewed from the exterior.***



*Double-hinged Garden Patio Doors , left hand outswing. Clear Glass, pre-finished in Warm White. Schlage Georgian lockset in Satin Nickel.*



# Garden Patio Doors

Madero Garden Patio Doors offer three select choices for your new construction or renovation project. All types are offered in a variety of sizes to fit your project.



## Single-Hinged Garden Patio Doors One Door Active | One Door Fixed

Ideal for accommodating multiple doors – creating a spectacular view.

One door is fixed while the other opens as an active door. Fixed doors offer a full lite sidelite, allowing additional sunlight to fill your room and provide a full view of the outdoors. Additional fixed panels can be added, to a maximum of four, including any active panels.

*Shown as LH Inswing*



## Double-Hinged Garden Patio Doors One Door Active | One Door Inactive

Full clearance double door system – provides the beauty of a garden patio door with full access to the outdoors.

Complete with a multi-point astragal, this product allows the inactive door to be securely locked and sealed or active as required. Active door must be double drilled.

*Shown as RH Outswing*



## Garden Venting Patio Doors One Door Active | One Door Venting

Designed to provide easy access to outdoor living spaces – as well as ventilation and natural light.

These garden doors features the active door as a typical swing door with optional sash lock for added security and thermal seal. Specify single or double drilling. The venting door is complete with standard screen, roto hardware, and sash locks with tie back for ease of use and to allow children to operate the active door.

*Available as 6/8 Outswing only*



*Workhorse Combo with Clear glass venting insert.  
Pre-finished in Tangerine, Schlage Corona keyed lockset.*



# Design

## Your Madero Door

### The Entry Series Workhorse Door System.

Manufactured in Canada to work in the Canadian climate.

### Steel or Fiberglass Door Options.

**Steel:** 24 gauge primed high definition steel door with polyurethane core in a 6 panel design.

**Fiberglass:** Smooth white pre-pigmented fiberglass, composite stile and rails, polyurethane core and full length steel reinforced wood lock block.

The door viewer is factory installed.

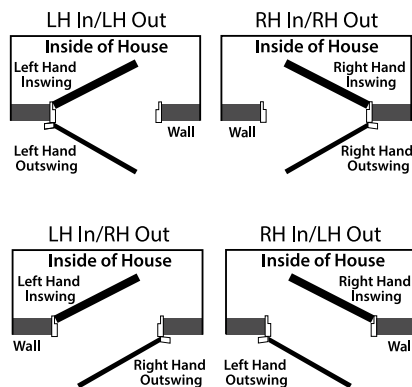
**Outside Door:** A 22" x 36" venting insert with dual, clear glass, raises and lowers for increased airflow. Fixed screen is included.

### Frame:

The frame uses a double rabbetted jamb system, accommodating two 1-3/4" doors as opposed to a traditional thinner exterior door. Choose from kiln dried, finger jointed primed pine, or prefinished smooth white composite. The inside door uses kerf weatherstripping. Available in 4-9/16", 6-9/16" or 8-1/2" jamb depth.

### Accessories:

Accessories included are adjustable strike plates, ball bearing hinges, corner pads, sill gaskets and a composite substrate mill finish extruded sill. A check chain is factory installed to prevent the exterior door from overextending during daily use or windy conditions.





*Model 149FV Elegant Selection, shown in Black.  
Tao door pre-finished in Smokey Teal.*

Add a Larson storm door to any model of Madero door system in 32", 34" or 36" widths by the standard 80" height. Available as factory installed or as DIY for existing doors in your home. A Larson storm door improves the energy efficiency of an entryway by up to 80%. Custom sizes and additional products are available.

## Ventilating Storm Doors

Let in the breeze when you want, the way you want, with these ventilating doors!

Larson Storm doors add great value. Choose from an all-metal frame construction or a tough, weather-resistant DuraTech® surface. The Reversa Screen provides top or bottom venting.







# Choose Your Door Design

First impressions matter. The design of your door reflects both your home's architecture and your personality. Your entrance system sets a warm and welcoming invitation.

16	<b>Door Designs</b>
18	Panelled Teak Fiberglass
20	Panelled Mahogany Fiberglass
22	Panelled Steel
24	Decorative Accents
26	4 Lite   Narrow Lite Neulite Fiberglass
28	Narrow Lite Steel
30	3 Lite
32	Craftsman Steel
34	Craftsman Classic   Craftsman Contemporary
36	3/4 Lite   3/4 Lite Neulite
38	1/2 Lite
40	Flush Door   One Lite
41	Full Lite Neulite Fiberglass   Brushed
42	Spotlights



*Teak Woodgrain Door. Shown with 16" NoirTek™ Offset Pull, Schlage Encode™ Smart Wifi Deadbolt in Satin Nickel and Ives RL30 Roller Latch.*

## Panelled Teak Fiberglass

## Contemporary Teak

Long praised for its natural beauty and endurance to the elements, teak has become one of the most valued wood species on the planet.

A modern grooved Teak Woodgrain fiberglass door slab is perfect for contemporary and retro style homes. It comes standard in a composite frame, with an option to use a primed wood frame. Choose direct glazed sidelites and transom to complement this luxurious panelled door.

**Sizes:** Width: 3/0 | Height: 6/8



Light Oak Medium Oak

Pre-pigmented, stained by manufacturer.



Raw Oak

Unfinished to accept paint or stain.

### Sidelite Glass:



Clear Low E

Transclear Low E

Additional glass options can be found throughout the brochure, and on [madero.ca](http://madero.ca)



*Teak Woodgrain in the Medium Oak stain with 16" SoftMet™ Offset Pull.*



*Teak Woodgrain prefinished in the Light Oak stain with direct glazed sidelites & transom in Clear glass. Shown with 16" NoirTek™ Offset Pull.*



*The One Panel Mahogany, stained Coffee Bean.  
Shown with Schlage Plymouth handleset in  
Bright Chrome.*

## Panelled Mahogany Fiberglass

## Rustic Mahogany

The Mahogany Woodgrain series emulates the beauty of natural hardwood. Perfect for Tuscan or Spanish inspired architectural style, providing maximum privacy with no glass requirement. Stain or paint the fiberglass door to achieve an individualized look.

A one panel plank complements the sleek architectural styling of new home designs. A two panel plank best complements a country or heritage style home. It comes standard in a textured woodgrain composite frame, with an option to use a primed wood frame. Choose direct glazed sidelites and transom to complement this panelled door.

**Sizes:** Width: 3/0 | Height: 6/8



One Panel Plank  
(ENRG12)



Two Panel Plank  
(ENRG22)



Unfinished to accept paint or stain.  
Refer to page 99 for stain options.

### Sidelite Glass:



Clear Low-E



Transclear Low-E

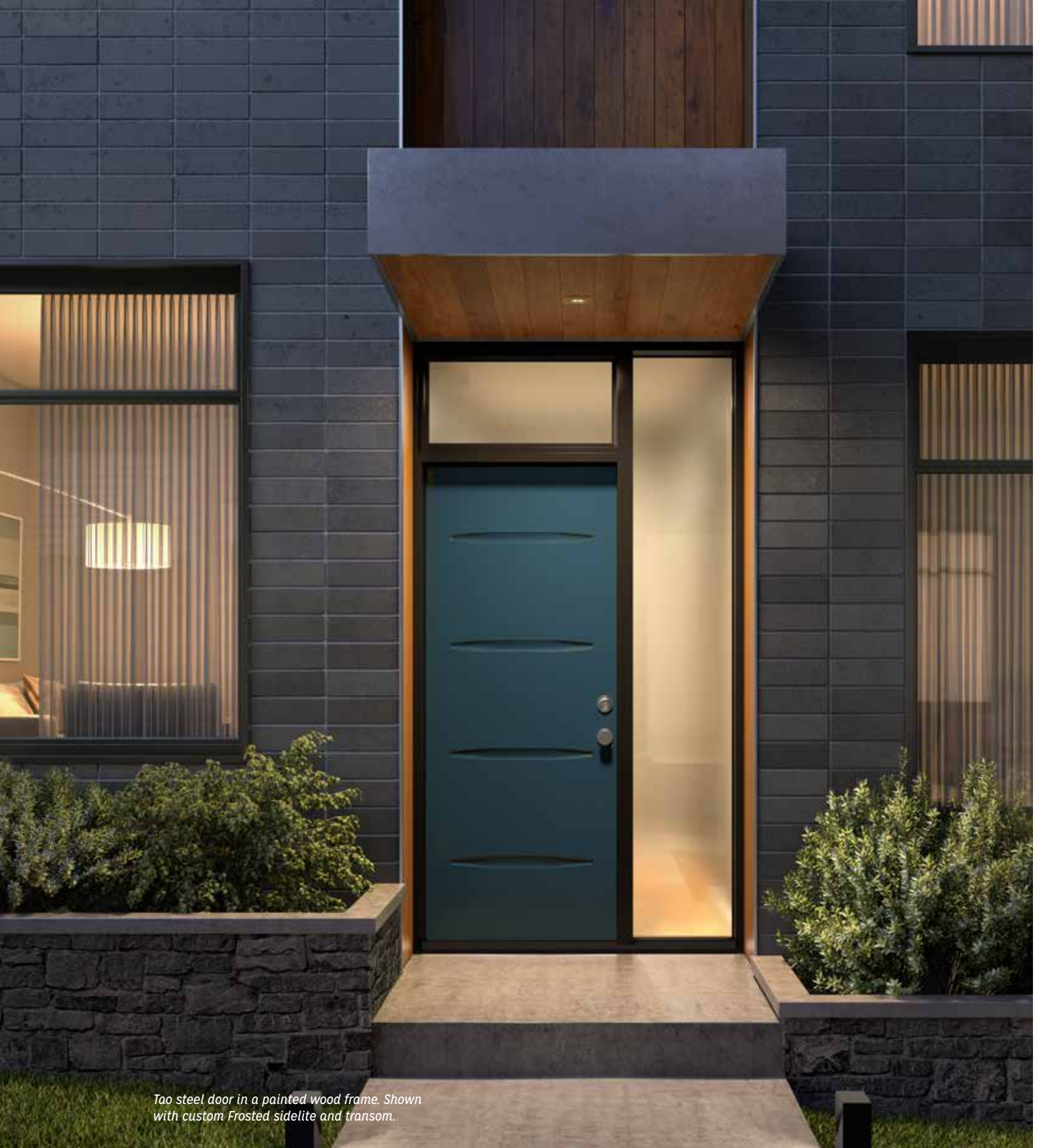
Additional glass options can be found throughout the brochure, and on [madero.ca](http://madero.ca)



*The One Panel Plank looks beautiful in the natural raw color. Emtek Hercules Knurled Monolithic Tubular Entry Set in Flat Black.*



*The Two Panel Plank custom painted with direct glazed sidelites in Clear glass. Shown with Schlage Georgian handleset in Matte Black.*



*Tao steel door in a painted wood frame. Shown with custom Frosted sidelite and transom.*

## Panelled Steel

## Tao

Tao means harmony with nature. This steel door's horizontal lines feature gentle organic curves for a minimalist style. Polytex white 24 gauge steel door is prehung in a pre-finished white composite frame, or primed pine wood frame, brickmould attached. Choose a single swing door, or with one or two direct glazed sidelites and transom to complement this Tao design.

Sidelites available in Clear or Transclear (Frosted) glass. Also available in a Garden Patio double door unit, with one active and one inactive. Complete with multi-point astragal.

**Sizes:** Width: 2/10, 3/0 | Height: 6/8



Horizontal, curved  
embossed lines



Model Tao

## Soho

This steel four panel embossed configuration is very popular in today's architecture. Polytex white 24 gauge steel door is prehung in a pre-finished white composite frame, or primed pine wood frame, brickmould attached. Choose a single swing door, or with one or two direct glazed sidelites and transom to complement this Soho design.

Sidelites available in Clear or Transclear (Frosted) glass. Also available in a Garden Patio double door unit, with one active and one inactive. Complete with multi-point astragal.

**Sizes:** Width: 2/8, 3/0 | Height: 6/8



Shaker inspired  
embossment



Model Soho

## Vog

Horizontal lines and angular embossing provide a graceful and simple style. Polytex white 24 gauge steel door is prehung in a pre-finished white composite frame, or primed pine wood frame, brickmould attached. Choose a single swing door, or with one or two direct glazed sidelites and transom to complement this Vog design.

Sidelites available in Clear or Transclear (Frosted) glass. Also available in a Garden Patio double door unit, with one active and one inactive. Complete with multi-point astragal.

**Sizes:** Width: 2/10, 3/0 | Height: 6/8



Horizontal, angular  
embossed lines



Model Vog



*Uno Accents with custom hardware.*

## Decorative Accents

## Decorative Accents for Uno & Vog Steel

These aluminum components have been designed to match our contemporary style doors. Accents give character, without compromising privacy. Available in brushed aluminum or black, these accents are surface applied by our skilled fabricators.

### Flush Door Design



#### Uno Accents

- Offset alignment
- Set of 4
- 5/16" x 26"

☐ Alunox ☒ Black



#### Uno Accents

- Centered alignment
- Set of 4
- 5/16" x 26"

☐ Alunox ☒ Black

### Surface Applied



Uno Accent Detail

### Vog Door Design



#### Vog 1 Accents

- Set of 4
- 1-1/8" x 4"

☐ Alunox



#### Vog 2 Accents

- Set of 4
- 9/16" x 24"

☐ Alunox ☒ Black



Vog 1 Accent Detail



Vog 2 Accent Detail



*The 4 Lite Neulite door makes a dramatic entrance in this double-hinged door system. Shown with NoirTek™ Collection straight pull in Black.*

## 4 Lite | Narrow Lite Neulite Fiberglass

## Two Options: 4 Lite | Narrow Lite

Brighten your entry with a Neulite door. These classic mid-century modern designs, characterized by sleek lines and deliberate simplicity, admits diffused light while maintaining privacy.



**SG14 Smooth White**  
Width: 2/8, 3/0  
Height: 6/8



**SG11 Smooth White**  
Width: 2/8, 3/0  
Height: 6/8

Neulite smooth white pre-finished fiberglass doors are flushed glazed to give a sleek, minimalistic look with no need for screw-in glass inserts.

Prehung in a pre-finished white composite frame or primed pine wood, brickmould attached.

Choose a single swing door, or with one or two sidelites and transom to complement this design.

### Two Sidelite Options:

Direct glazed with 13-3/4"x79" glass. Panelled sidelites have a 14" Neulite fiberglass panel with 8" x 64" glass. Glass is available in Clear or Transclear (Frosted) glass.

The design is available in a Garden Patio double door unit, with one active and one inactive. Complete with multi-point astragal.

### Glass Options:



Clear Low E



Transclear Low E



Smooth White Neulite Detail



*The Narrow Lite is pre-finished in Black with Frosted glass. Pre-finished white composite frame. 60" MegaTek™ Pull, polished Stainless Steel.*



*This custom unit allows for sidelite panels to be constructed and installed separately from the single swing door. Glass width can vary to suit your opening.*



*Linea steel door with panelled sidelite, Clear glass. Pre-finished in Warm White.*

## Narrow Lite Steel

## Linea

Linea's distinctive embossing gives it a post-industrial look. Polytex white 24 gauge steel door is prehung in a pre-finished white composite frame, or primed pine wood frame, brickmould attached. Choose a single swing door, or with one or two sidelites and transom to complement this design.

### Two Sidelite Options:

Direct Glazed: 13-3/4" x 79" glass.

Panelled Sidelite: using 14" Neulite Fiberglass Panel with 8" x 64" glass.

**Sizes:** Width: 2/8, 2/10, 3/0 | Height: 6/8

### Glass Options:



Clear Low E



Transclear Low E



Embossed post-industrial look



Linea door with Frosted glass, custom pre-finishing.



Linea door system featuring a Melon painted slab with Clear glass, Black painted frame, Ordered with no brickmould.



3 Lite steel door pre-finished in Black. Shown with Celeste glass, Schlage Century single cylinder handle in Bright Chrome.



## 3 Lite

The 3 lite door with contemporary framed 22" x 17" door glass and optional sidelite with 7" x 64" glass provides a very modern look. Available in steel or fiberglass with frame options of wood or smooth white composite.

**Sizes:** Width: 2/8, 2/10, 3/0  
Height: 6/8



Model 13



Model 13  
Cutout

## Glass options

Choose from the selection shown for matching door and sidelite glass. Refer to [madero.ca](http://madero.ca) for glass door visualization.



Celeste



Soft



Clear - Low E



Cachet



Sandblast



Fluid



Alys



Kira

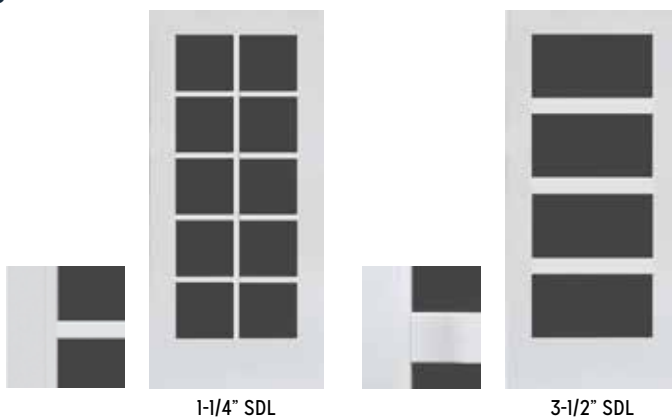


*3-1/2" SDL Kit with Clear glass, pre-finished in Ash. Schlage Century single cylinder handleset in Satin Nickel.*

## Simulated Divided Lites | SDL Kits

Simulated Divided Lites (SDL) elevate and enhance the beauty of an entryway. SDL bars can be used on any neulite flushed glazed door to create a modern look. 100% composite SDL bars are fixed directly to the glass. 1-1/4" and 3-1/2" SDL bars are available in smooth or brushed finishes to match the door's finish.

**Sizes:** SDL kits can be used on any width and height of door.



1-1/4" SDL

3-1/2" SDL

Multiple design options available. Contact your Madero Sales Rep.



*Victoria steel door with Clear glass, shown with Decorative Shelf, custom painted, Schlage Plymouth knob and Encode deadbolt in Satin Nickel.*

## Craftsman Steel

## Victoria

Available in a steel door only, the Victoria Shaker is inspired by classic American architectural styles. The embossing showcases beautifully when the door is painted. Used as either a panelled door or add one 22" x 14-7/16" glass insert. Polytex white 24 gauge steel door is prehung in a pre-finished white composite frame, or primed pine wood frame, brickmould attached. Choose a single swing door, or with one or two panelled sidelites and transom to complement this traditional design. Select matching glass in a full panelled sidelite.

Also available in a Garden Patio double door unit, with one active and one inactive. Complete with multi-point astragal.

**Sizes:** Width: 2/8, 2/10, 3/0 | Height: 6/8



Victoria  
Cutout



Victoria

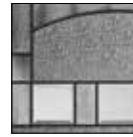


## Glass Options

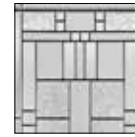
Choose from the selection shown for matching door and sidelite glass. Refer to [madero.ca](http://madero.ca) for glass in door visualization.



Alys



Bistro



Cachet



Celeste



Clear Low E



Kallima



Sandblast



Soft



Winchester



### Decorative Shelf

Optional for the Victoria Shaker steel door. Factory installed with screws.



Victoria door with direct glazed sidelites and transom. Clear glass, pre-finished in Espresso. Schlage Century handleset in Satin Nickel.



*Craftsman Smooth White with Metropolis glass.  
Shown with Schlage custom Addison 3/4 Single  
Cylinder handleset in Matte Black.*

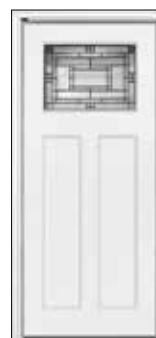
## Classic Craftsman

Fir grain has straight, fine vertical graining with deep embossed panels creating beautiful shadow lines and the appearance of real wood. When ordered, the door is a light almond color to accept paint or stain. Choose matching panelled sidelites and a fir composite frame.

Smooth white is timeless design suitable for a wide variety of architectural homes. This maintenance free door partners with a composite frame and matching panelled sidelites.



**FG Metropolis**  
Width: 3/0  
Height: 6/8, 8/0



**SG Metropolis**  
Width: 3/0  
Height: 6/8, 8/0



Metropolis glass included as shown.

### Add-on 4 Block Dentil Shelf

*Available, factory installed with adhesive.*



**FG-DENTIL SHELF 4B**



**SG-DENTIL SHELF 4B**



*Contemporary Craftsman door featuring Clear Low-E glass. Schlage Century handleset in Satin Chrome*

## Contemporary Craftsman

The Contemporary Craftsman was introduced in 2022. This three panel design provides the smooth panels and clean lines of a traditional shaker door.

Available factory glazed in Clear or Transclear Low-E glass with the option to add a 3 Lite SDL kit. This maintenance-free door is prehung in a white composite or wood frame, and partners with a full panelled sidelites.



**SG-CRAFT30**

Width: 3/0  
Height: 6/8

### Glass Options:



Clear Low-E



Transclear Low-E

### Add-on 4 Block Dentil Shelf

*Available, factory installed with adhesive.*



**SG-DENTIL SHELF 4B**



*3/4 Lite door painted Warm White shown with Portrait glass and custom handle.*

## 3/4 Lite Steel

Coordinate all entry ways in your home by using Model 25 as a panelled door or with the beautiful glass insert. Available in a steel or fiberglass door prehung with frame options of wood, smooth white composite or textured composite. This design partners best with a panelled sidelite featuring 3/4 height glass (as shown above). Choose any glass design that measures 22" x 48".



**Model 25**  
**Smooth White**  
Width: 2/8, 2/10, 3/0  
Height: 6/8

## 3/4 Lite Neulite Fiberglass

Model 24 gives a clean look with larger viewing area than the Model 25, with no need for screw-in glass inserts. Available in a Neulite 3/4 fiberglass door prehung with frame options of wood, smooth white composite or textured composite. Partner with a Neulite 3/4 panelled sidelite and choose any glass design that measures 22" x 48".



**Model 24-2248**  
**Smooth White**  
Width: 2/8, 2/10, 3/0  
Height: 6/8



Smooth White Neulite Detail



*3/4 Lite Neulite door painted Ash, shown with Clear Low-E glass. Custom handleset.*

## 3/4 Lite Neulite Fiberglass | Brushed

Model BG24 Neulite provides a larger viewing area with no screw-in insert. Available only in brushed grain fiberglass, with frame options of primed wood, or smooth white composite.

Full lite panelled sidelites or direct glazed sidelites provide a modern look. Available in a Garden Patio double door unit, with one active and one inactive. Complete with multipoint astragal. Options: Rectangular Transom

**Sizes:** Width: 2/8, 3/0 | Height: 6/8

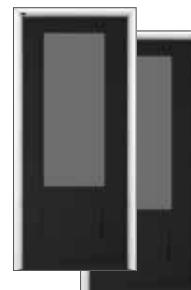
**Glass Sizes:** 2/8: 22"x48" | 3/0: 26" x 48"

**Finish:** White, Black (Interior and Exterior)

### Door Only:



**Model BG24-2648**  
Brushed White



**Model BG24-2648**  
Black Exterior  
Black Interior

### Glass Options:



Clear Low E



Transclear Low E



Brushed Grain



1/2 Lite

## 1/2 Lite | 6 Panel

Coordinate all entry ways in your home by using a traditional 6 Panel slab with or without glass. An extensive selection of 22" x 36" glass inserts are available. Choose from a steel or fiberglass door with frame options of wood, smooth white composite or textured composite. These doors partner well with 1/2 height or full glass in panelled sidelites.

**Sizes:** Width: 2/8, 2/10, 3/0 | Height: 6/8



Cachet glass shown

## 1/2 Lite Neulite Fiberglass

The flush glazed option gives a cleaner look, with a larger viewing area and no need for screw-in inserts. An extensive selection of 22" x 36" glass is available. Available in fiberglass only with frame options of wood, smooth white composite or textured composite. These doors partner well with a full Neulite sidelites.

**Sizes:** Width: 2/8, 2/10, 3/0 | Height: 6/8

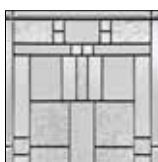


9 Lite Clear glass shown

## Glass Options

Choose from the selection shown for matching door and sidelite glass. Refer to [madero.ca](http://madero.ca) for glass in door visualization.

*Note: Channele partners with Niagara glass sidelite.*



Cachet



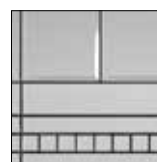
Oak Park



Waterside



Rain



Channele



Nobel



Internal Grilles



## Flush Door | One Lite

The simplicity of a flush door (Model 00) can be used in many locations throughout the home. When partnered with a full length door pull or luxurious door hardware, the look becomes very modern. One Lite glass inserts can be added for rooms requiring extra natural light. The selection of glass options is nearly unlimited for both the door and panelled sidelites. Glass selections can be found on pages 46 to 81. For visualization, visit [madero.ca](http://madero.ca).

Available in a steel or fiberglass door with frame options of wood, smooth white composite or textured composite. Available in a Garden Patio double door unit, with one active and one inactive. Complete with multi-point astragal.

**Glass Size:** 2/6, 2/8 x 6/8 - 20" x 64"    2/6, 2/8 x 8/0 - 20" x 80"  
2/10, 3/0 x 6/8 - 22" x 64"    2/10, 3/0 x 8/0 - 22" x 80"

**Sizes:** Width: 2/6, 2/8, 2/10, 3/0, 3/6 | Height: 6/8, 8/0



*The contemporary style of Fragrance is perfect for any modern front entrance. The sandblasted glass has clear lines that add a touch of brightness to the home. Fragrance offers maximum privacy.*

Brushed Grain

## Full Lite Neulite Fiberglass | Brushed

The Full Lite Neulite Fiberglass door offers a wider viewing area and cleaner appearance. A pre-pigmented white skin has a 25 year warranty and accepts paint or stain. Available with frame options of wood or smooth white composite. Glass selections can be found on pages 46 to 81. For visualization, visit [madero.ca](http://madero.ca). Available as single door or partnered with matching flush glazed, panelled sidelites or direct glazed sidelites.

**Sizes:** Width: 2/8, 2/10, 3/0 | Height: 6/8, 8/0



BG15 Brushed White

### Glass Sizes:

**Glass selection can be found on pages 48-81**

2/6 x 6/8 | 22" x 64"  
2/8 x 6/8 | 22" x 64"  
2/10 x 6/8 | 26" x 64"  
3/0 x 6/8 | 26" x 64"  
2/8 x 8/0 | 22" x 80"

**Available in Clear Low-E or Transclear Low-E:**

3/0 x 6/8 | 26" x 64"  
3/0 x 8/0 | 26" x 80"



6 Lite (8/0 height) Horizontal Oak Woodgrain Textured door with Frosted glass, 14" Frosted sidelite, 16" straight Noirtek™ door pull and Schlage B60 deadbolt in Matte Black.



## Spotlights

Spotlights are the ideal choice for a modern mid-century home, while also complementing a variety of home designs.

Available in a single swing door or with one or two sidelites. Choose from a steel or fiberglass door with frame options of wood or smooth white composite. Panelled sidelite glass is available in all patterns shown. Direct glazed sidelites are available with Clear or Frosted glass.



Celebration Ocean



Chinchilla



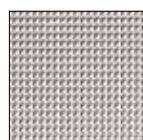
Circuit



Clear - Low-E



Celebration Earth



Cubed



Frosted



Rain



3 Lite Vertical Option B painted Warm White. Shown with Schlage Century handleset in Satin Nickel.

## Spotlite Model 842

Eight glass patterns are available in 22" x 3.5". Available in a steel or fiberglass door and with frame options of wood, smooth white composite or textured composite.

Panelled sidelite glass is available in all patterns shown. Direct glazed sidelites available with Clear or Frosted glass.

**Sizes:** Width: 2/8, 2/10, 3/0, 3/6 | Height: 6/8, 8/0

**Glass Size:** 22" x 3.5"



3 Lite Vertical  
Option A  
223-3LVA



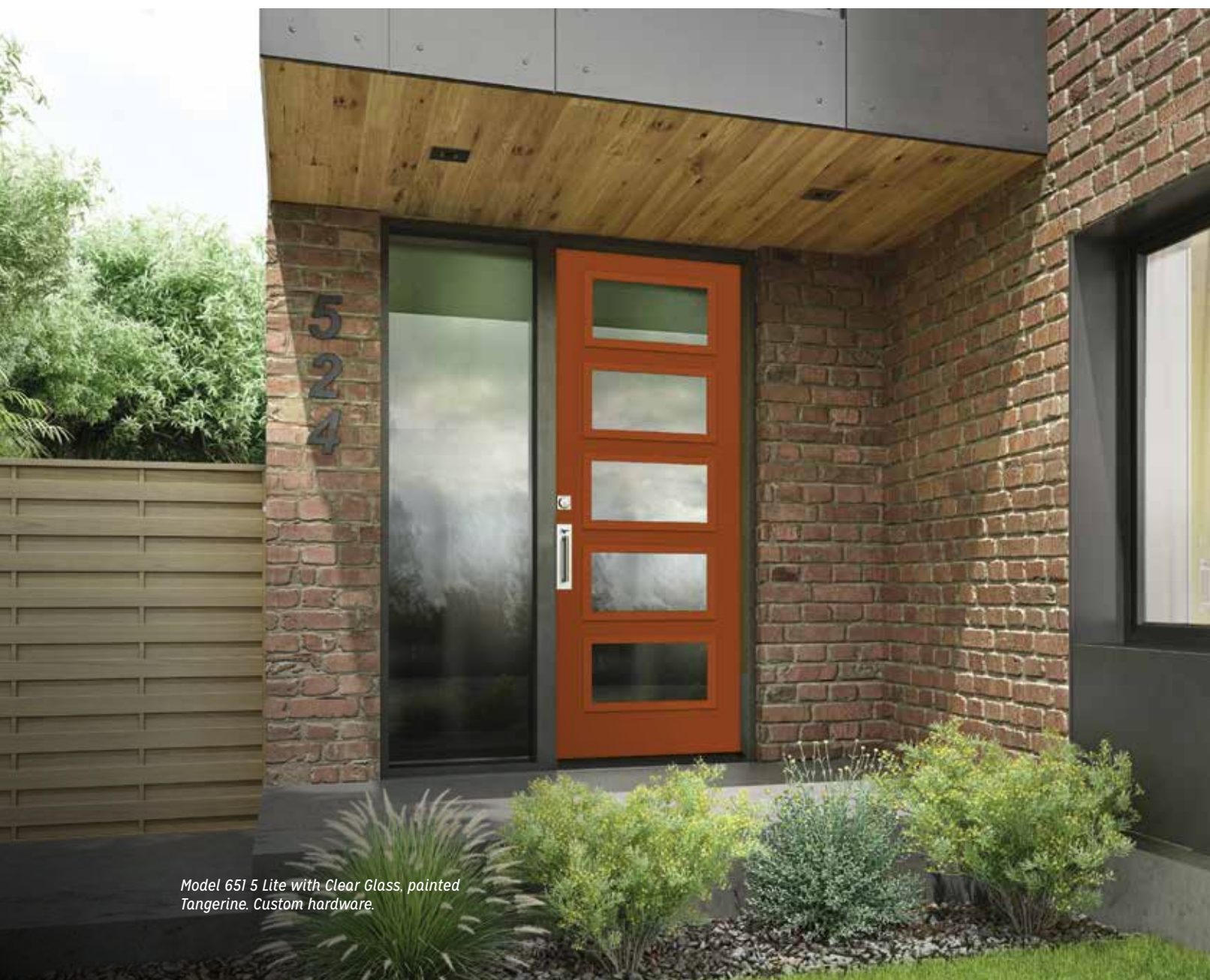
3 Lite Vertical  
Option B  
223-3LVB



5 Lite  
Horizontal  
223-5LH



6 Lite  
Horizontal (8/0)  
223-6LH



*Model 651 5 Lite with Clear Glass, painted Tangerine. Custom hardware.*

## Spotlite Model 651

This design adds a modern flair to any architectural styling. Eight glass patterns are available in 22" x 10". Panelled sidelite glass options are available in all patterns shown. Direct glazed sidelites are available with Clear or Frosted glass.

Available in a steel or fiberglass door with frame options of wood, smooth white composite or textured composite.

**Sizes:** Width: 2/8, 2/10, 3/0, 3/6 | Height: 6/8, 8/0

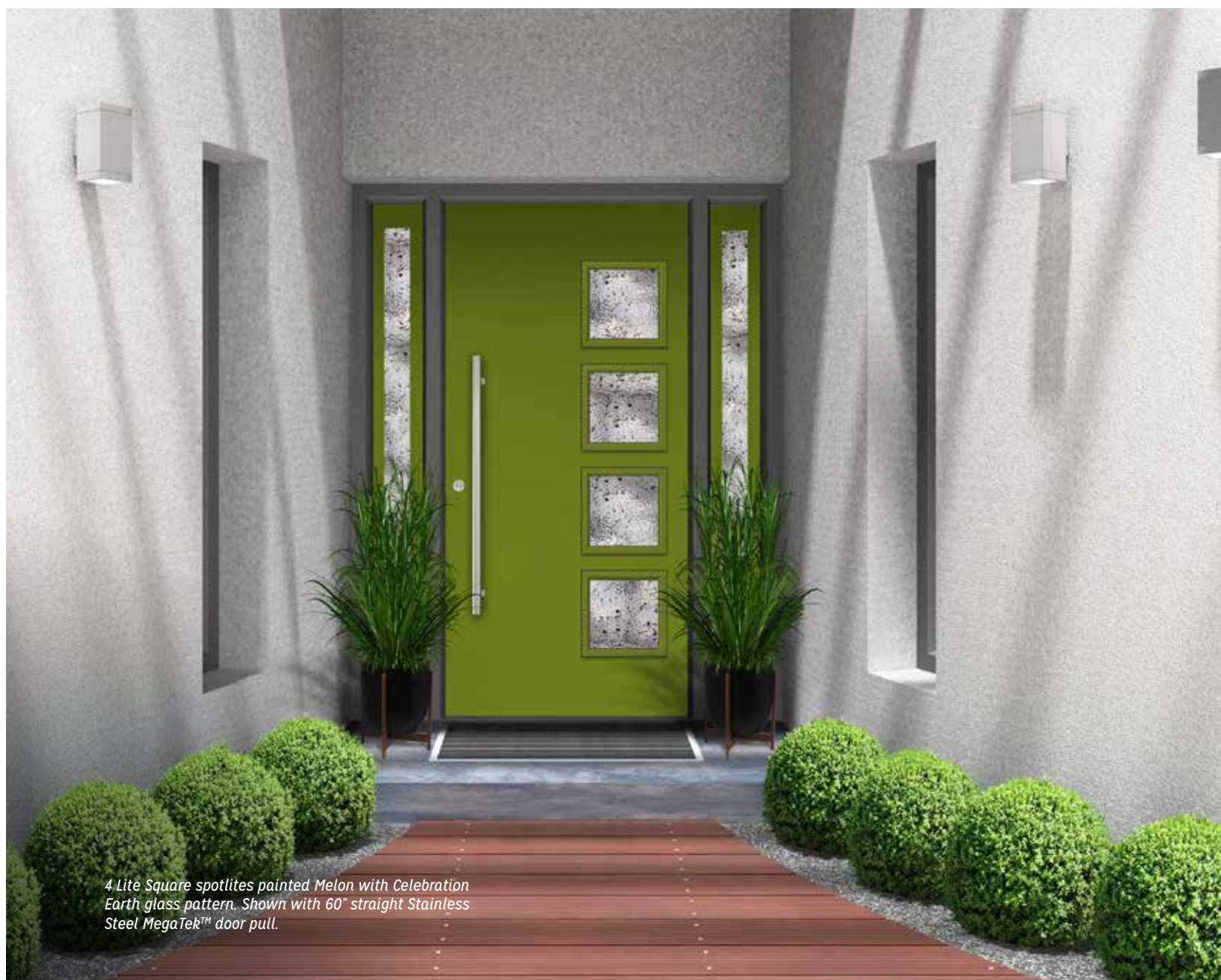
**Glass Size:** 22" x 10"



**4 Lite**  
2210-4



**5 Lite (8/0)**  
2210-5



4 Lite Square spotlights painted Melon with Celebration Earth glass pattern. Shown with 60" straight Stainless Steel MegaTek™ door pull.

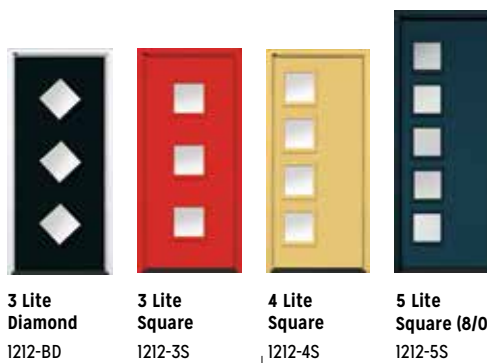
## Spotlite Model 840

This popular pattern that began in the 1950's has made a resurgence to elevate modern home architecture. The 12" x 12" square is available in eight glass patterns. Panelled sidelite glass options are available in all patterns shown. Direct glazed sidelites are available with Clear or Frosted glass.

Available in a steel or fiberglass door with frame options of wood, smooth white composite or textured composite.

**Sizes:** Width: 2/8, 2/10, 3/0 | Height: 6/8, 8/0

**Glass Sizes:** 12" x 12"



3 Lite  
Diamond  
1212-BD

3 Lite  
Square  
1212-3S

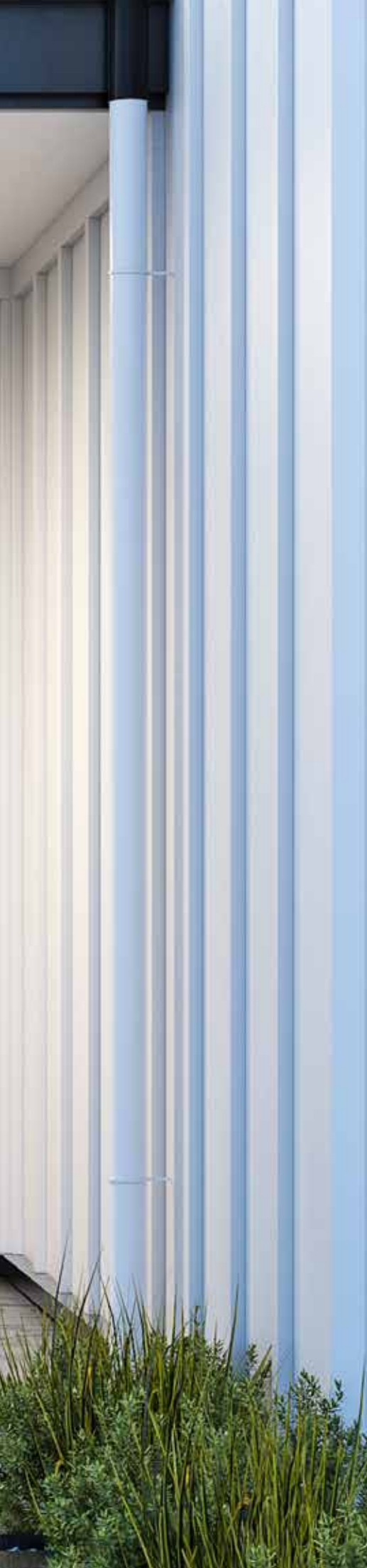
4 Lite  
Square  
1212-4S

5 Lite  
Square (8/0)  
1212-5S

Lockside opposite of glass



*Single hinged door system with one active and one fixed door. Shown in Black, featuring Equation glass which offers the simplicity and privacy of sandblasted finish glass, crossed with black perpendicular lines.*



# Choose

## Your Door Glass

Door glass is a great way to customize your entryway and bring natural light into your home. Design selections vary from decorative to textured, and provide a solution for every architectural style.

48

### Textured Glass

Textures and patterns with a diverse selection of privacy bring a new dimension to entryway door glass.

55

### V-Groove

V-Groove patterns incorporate an engraving process on sandblasted tempered glass, providing texture and elegance while still having the allure of decorative glass.

57

### Decorative Glass

Handcrafted glass is cut and elegantly shaped to match the design preferences of home owners. Privacy levels range from 0 (Transparent) to 10 (Opaque).

73

### Silkscreen Glass

Silkscreen decorative glass is made by printing a layer of UV cured ink on the surface of glass through the screen mesh used for tempering. As a result, the glass is durable, scratch proof, solar shading, anti-glare and, of course, beautiful.

75

### Wrought Iron

For homeowners who prefer wrought iron and rich patinas over highly polished finishes, this collection is made for you.

76

### Functional

When function and budget matter, Clear Glass, Clear Glass with Grilles, Venting Units and Mini Blinds are the primary choices.



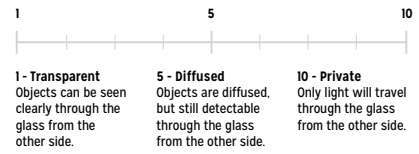
## Sandblast

Sandblasting gives this textured glass an elegant surface that allows natural colors to penetrate, blending privacy with natural light. Sandblast gives a similar appearance to Frosted and Transclear, available in most sizes. Low-E with Argon. Privacy level 9.

# Textured Glass

Textures and patterns with a diverse selection of privacy bring a new dimension to entryway door glass. Textured glass is available in door glass sizes of 1/2, 3/4, and full lite with matching panelled sidelites. Direct glazed sidelites partner with Clear Low-E or Frosted Low-E. Additional glass options can be found throughout the brochure, and on [madero.ca](http://madero.ca)

## PRIVACY RATING



**CBG \$\$**  
View on page 47



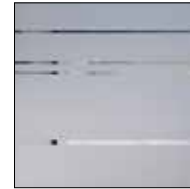
**CHINCHILLA \$\$**  
View on page 48



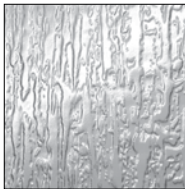
**EDGE \$\$**  
View on page 48



**FLUID \$\$**  
View on page 50



**FRAGRANCE \$\$**  
View on page 39



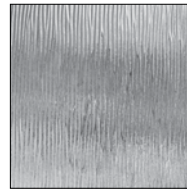
**RAIN \$**  
View on page 50



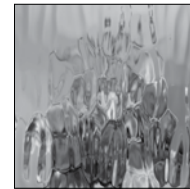
**SANDBLAST \$\$**  
View on page 46



**SOFT \$\$**  
View on page 49



**STREAMED \$**  
View on page 51



**VAPOR \$\$**  
View on page 51



## CBG

A clear glass border gives the sandblasted glass the appearance of floating within its frame for a maximum privacy design with subtle, yet elegant, style. Privacy level 9.



22x64



7x64



22x48



8x48



22x17



22x12



## Chinchilla

As touchable as its namesake, Chinchilla's fine lines and organic, fur-like texture create a striking wave pattern when seen from afar. Privacy level 9.



## Edge

Featuring a Sandblasted finish centre surrounded by a clear border, Edge offers both privacy and visibility. Pair this versatile and timeless panel with any type of house. Privacy level 9.





Novatech®

## Soft

Soft attracts the eye and touch thanks to its unconventional upholstery looking pattern. Soft textured glass is a technological advancement that will define the character of your entrance. The textured surface is enclosed in glass. Low E with Argon. Privacy level 5.





## Rain

Rain features a vertical pattern and textured surface that creates the illusion of rain trickling down a window. Textured glass surface is enclosed in glass.

Privacy level 9.



## Fluid

This innovative glass design leaves an impression of calmness. Its bold yet simple pattern is well suited for contemporary entrances.

Privacy level 5.





## Streamed

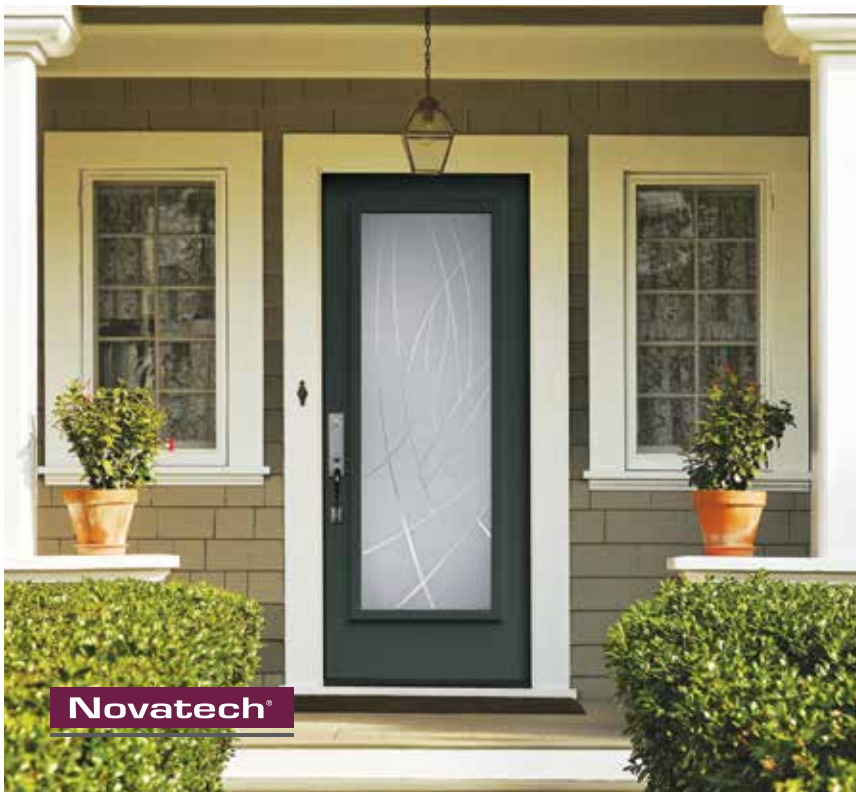
The pronounced vertical pattern and strong ribbed texture of Streamed creates the illusion of organic flowing water in your entryway. Privacy level 9.



## Vapor

Reminiscent of the northern lights. Vapor creates an ethereal play of light and shadow. Textured surface exposed to the inside of your home. Low E - privacy level 6.





## Alys

The Alys V-Groove suggests motion. It is both natural and abstract bringing your entryway to life with its dynamic composition. Low-E with Argon. Privacy level 9.



## Zenith

The simple V-Groove lines are perfect for any design, whether paired with a bold textured exterior or a minimalist entryway. Sandblast and Clear glass provide a privacy rating of 6.



## V-Groove Glass

V-Groove patterns incorporate an engraving process on sandblasted tempered glass. Providing texture and elegance while still having the allure of decorative glass.



**ALYS** \$\$  
View on page 65



**EMORI** \$\$  
View on page 64



**ZENITH** \$\$  
View on page 65



## Emori

Emori features an organic sandblasted pattern that reflects nature while giving you privacy and allowing light through the lines. Privacy level 9.





## Amadeus

The dynamic geometric shapes in Amadeus blend four interesting glass textures that provide a contemporary look and make a bold statement to any entryway. Platinum nickel coming pairs beautifully with the designs in the glass. Amadeus offers high privacy.



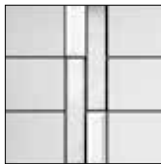
# Decorative Glass

Handcrafted glass is cut and elegantly shaped to match the diverse design preferences of home owners. Decorative glass is available in door glass size of 1/2, 3/4 and full lites with matching panelled sidelites, unless otherwise shown on feature pages. Direct glazed sidelites and transoms are available with Clear Low E or Frosted Low E glass.

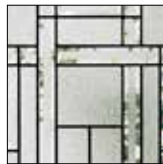
For more glass options not featured, refer to [madero.ca](http://madero.ca)



**AMADEUS \$\$**  
View on page 56



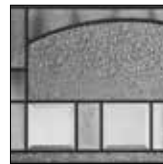
**ARIMA \$\$**  
View on page 58



**ATTRACTION \$\$**  
View on [madero.ca](http://madero.ca)



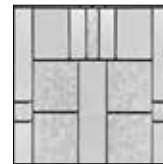
**BELMONT \$\$**  
View on page 59



**BISTRO \$\$**  
View on page 60



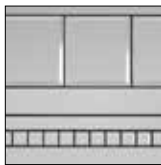
**BOLERO \$\$**  
View on page 60



**CACHET \$\$\$**  
View on [madero.ca](http://madero.ca)



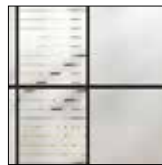
**CELESTE \$\$**  
View on [madero.ca](http://madero.ca)



**CHANELLE \$\$\$**  
View on page 61



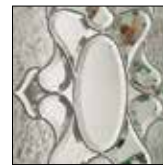
**CROSSWALK \$\$**  
View on page 62



**ENDRICK \$\$**  
View on page 63



**GABRIELLA \$\$**  
View on page 63



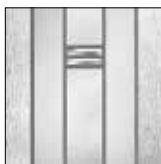
**HEIRLOOM \$\$\$**  
View on [madero.ca](http://madero.ca)



**KALLIMA \$\$\$**  
View on page 64



**MAJESTIC \$\$\$**  
View on [madero.ca](http://madero.ca)



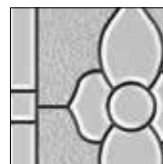
**MATHEUS \$\$\$**  
View on page 65



**MISTRAL \$\$\$**  
View on [madero.ca](http://madero.ca)



**NOBEL \$\$\$**  
View on [madero.ca](http://madero.ca)



**NOUVEAU \$\$\$**  
View on [madero.ca](http://madero.ca)



**OAK PARK \$\$\$**  
View on page 66



**OPAL \$\$\$**  
View on page 67



**OPHIR \$\$\$**  
View on page 67



**PARIS \$\$\$**  
View on [madero.ca](http://madero.ca)



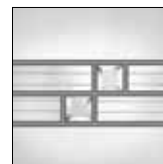
**PORTRAIT \$\$\$**  
View on [madero.ca](http://madero.ca)



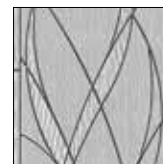
**RENEWED  
IMPRESSIONS \$\$\$**  
View on [madero.ca](http://madero.ca)



**RYDER \$\$**  
View on page 68



**TENDANCE \$\$**  
View on page 69



**WATERSIDE \$\$\$**  
View on page 71

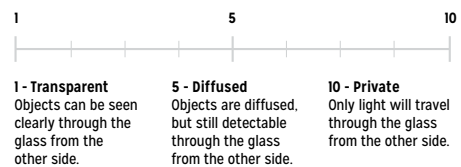


**WHISTLER \$\$**  
View on page 70



**WINCHESTER \$\$**  
View on page 70

## PRIVACY RATING





## Arima

Arima features clean lines and a consistent rectangle pattern moving throughout the centre of the glass. Combining Screen, Satin and Beveled Clear glass gives a modern fresh feel. Privacy level 7.





Novatech®

## Belmont

Belmont's minimalist, asymmetrical composition of flat black patina coming and satin finish glass fits perfectly with the volumes and materials found in the architecture of contemporary houses. Privacy level 7.



22" x 64"



7" x 64"



22" x 48"



8" x 48"



## Bistro

Chinchilla, Diamond and Beveled clear glass combine with patina coming. Decorative glass is enclosed, providing a triple paned unit. Low E with Argon. Privacy level 6.



## Bolero

A dance of retro and modern textures assembled in dynamic geometric shapes. Bolero sets the tone for your "mid-century modern" or contemporary style home. Privacy level 3.



22" x 64"

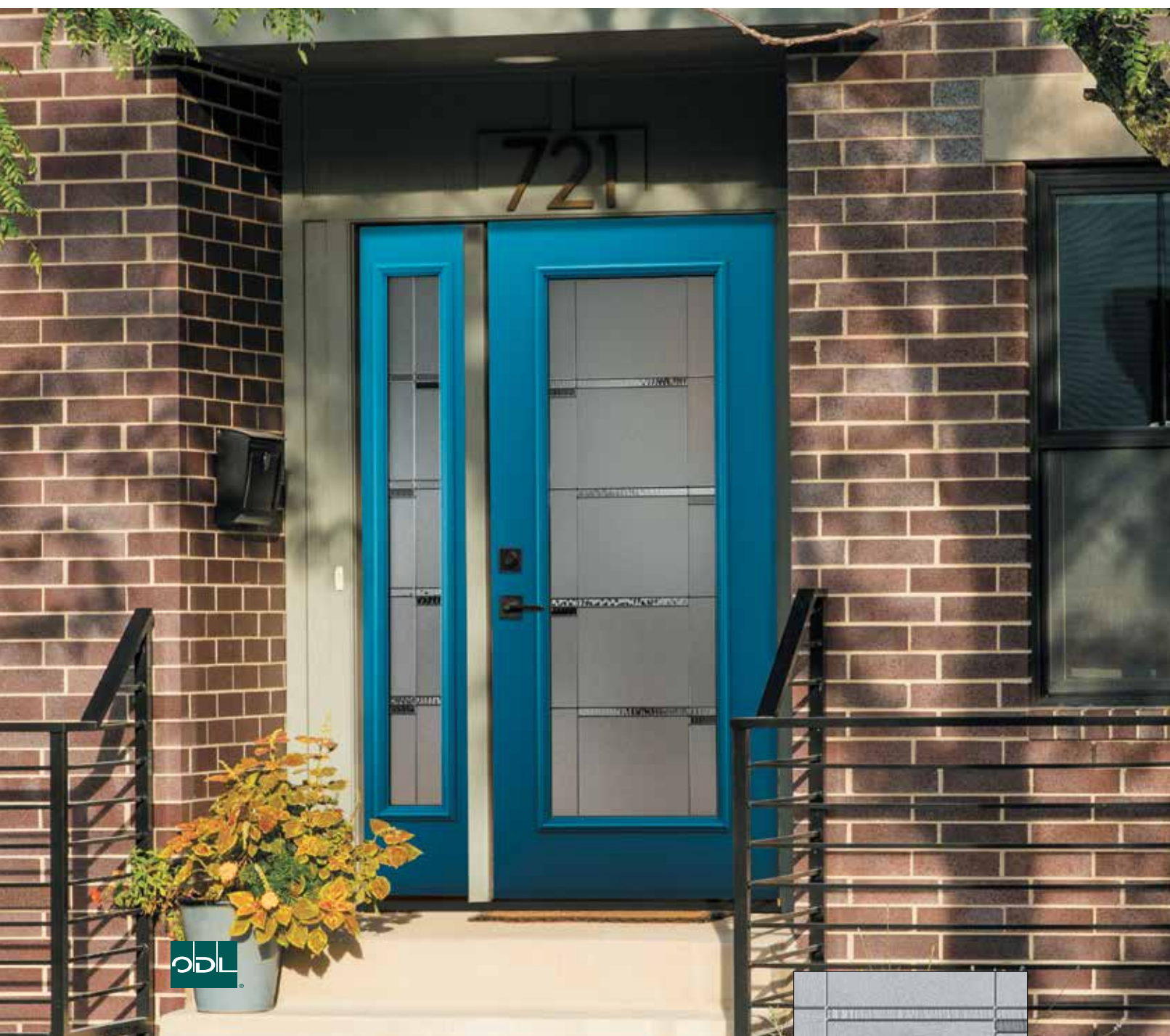
22" x 48"



## Chanelle

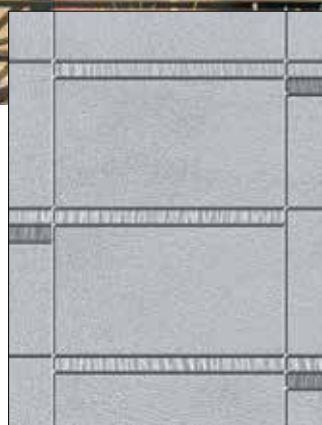
Stylish Chanelle can be elegantly integrated into the architectural styling of a bygone era, or matched to the simple, sleek lines of today. Beveling is the hallmark of this refined design. Chinchilla, Niagara and Beveled clear glass with patina coming provide privacy level 6. Decorative glass is enclosed, providing a triple glazed unit. Low E with Argon.





## Crosswalk

Modern design comes to life through strong linear lines interrupted by bold pops of grey glass. Crosswalk's look is abstract, modern and stylish. Softwave glass in clear and grey is complemented by Micro-Iced Granite glass. Nickel coming is used for a visually clean look. Privacy level 8.





## Endrick

Inspired by contemporary architecture, Endrick incorporates modern materials, interesting textured patterns, and crisp lines providing maximum privacy.



## Gabriella

Playful yet contemporary, Gabriella's silver aluminum coming intersects between fine patterns and textures for maximum privacy while clear glass allows a peek into the world on the just other side of the door.





Novatech®

## Kallima

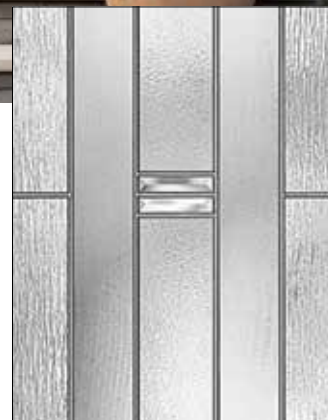
Kallima will charm lovers of glass. Characterized by its handmade pieces of blended black and clear glass, the Kallima offers an exclusive look every time. Privacy level 9.





## Matheus

Matheus is a minimalist take on traditional camed doorglass, embracing center bevel clusters for a stately look with none of the fuss. The high-privacy design is made up of a mix of patterns, textures, and clear bevels, and is available in silver aluminum and pewter aluminum coming.





## Oak Park

When you think Craftsman style, you're thinking Oak Park. A patina finish and handcrafted, textured glass create a striking geometric pattern reminiscent of Arts and Crafts design. Four glass types create a bright entryway and medium privacy level.





## Opal

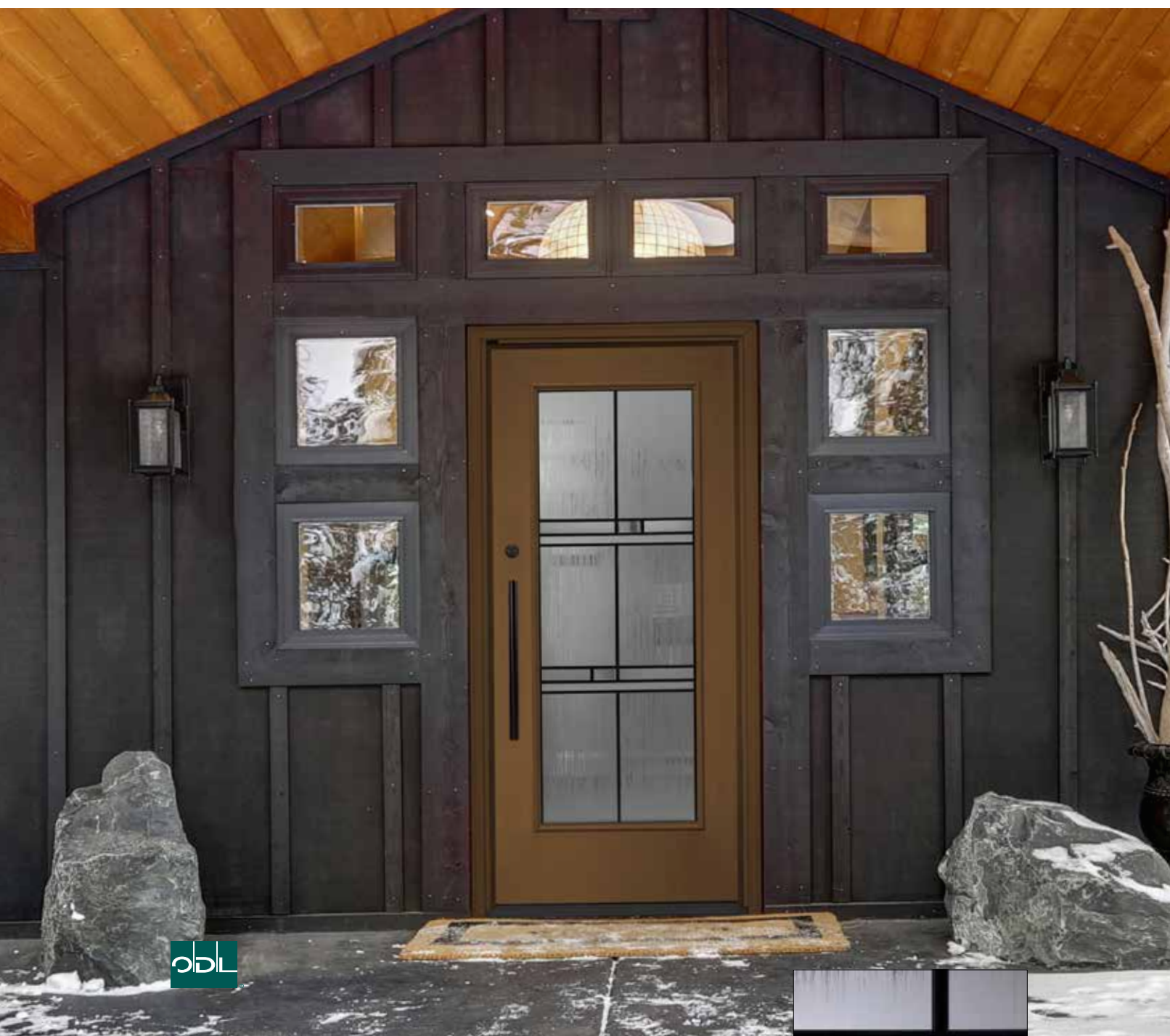
Clear and Satin finish glass will ensure the privacy of your home, while allowing light to flood in. Decorative glass is enclosed, providing a triple paned unit. Low-E with Argon. Privacy level 7.



## Ophir

Contrasting vertical textured glass gives movement to Ophir. Granite, Pinhead, Gray and Aqualite glass paired with zinc or patina coming allow for a balance of privacy and light. Privacy level 7.





## Ryder

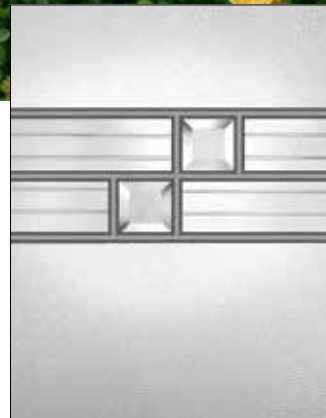
Ryder is inspired by minimalism and simple lines. It joins together several high-privacy textures and patterns. Privacy level 8.





## Tendance

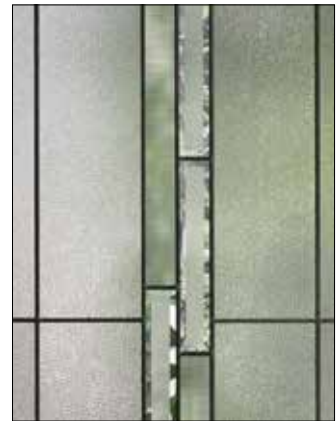
Like a piece of modernist art, Tendance captures the eye and imagination. Textured bevel squares twirl on a field of high-privacy textures with pewter aluminum coming.





## Whistler

Whistler's timeless geometric design adds a contemporary flair. Vertical columns of patterned bevels and textured glass are framed by maximum-privacy textures and patina coming.



## Winchester

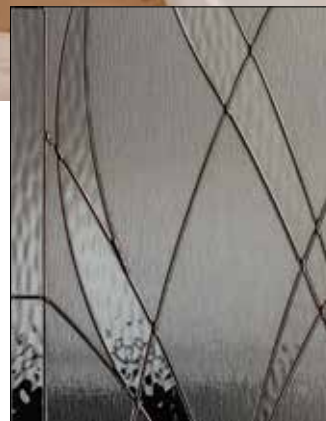
Winchester offers a rich, contrasting mix of clear and satin finish glass with black patina coming. Winchester provides both privacy and visibility. Privacy level 5.





## Waterside

Movement is depicted by the glass selection of Softwave and Streamed glass patterns. Black chrome coming sets off the pattern. Privacy level 8.





**Novatech®**

## Kira

Two layers of fine, Sandblasted finish lines overlap to create a natural looking pattern that provides a good degree of privacy. Kira delicately filters light, and fills your entrance with a sense of calm.



## Silkscreen Glass

Silkscreen decorative glass is made by printing a layer of UV cured ink onto the surface of the glass through the screen mesh used for tempering. As a result silkscreen printed glass is durable, scratch proof, solar shading, anti-glare and beautiful.



**AZUR** \$\$  
View on page 71



**BLANCA** \$\$  
View on madero.ca



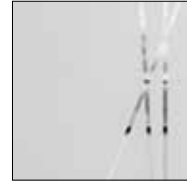
**EQUATION** \$\$  
View on page 44



**KIRA** \$\$  
View on page 70



**MIST** \$\$  
View on page 4



**TIMBER** \$\$  
View on page 72



**Novatech®**

## Azure

Elegant and distinguished, Azur will give you the privacy you need, while its thin, translucent bands will brighten up your space. Its design creates a unique, dynamic effect. Azur is ideal for contemporary and eclectic styles whether you're renovating or building a new house.





## Timber

Like gently leaning trees in a peaceful forest, Timber's simple lines create tranquility and a calm beauty that graces your front door with high privacy.



## Wrought Iron Glass

Wrought iron scrolling and textured glass will add old-world charm to your home. Whether your architectural style is Spanish or Rustic. Wrought Iron will bring an authentic touch to your entryway.



### Jacinto

Wrought iron designs are as current today as they were 100 years ago. Privacy level 9.



Only available in 3/4 lite, full lite, full sidelite.



### Courtyard

The pronounced fretwork of Courtyard creates a look that is both strong and subtle. Privacy level 9.





## Functional Glass

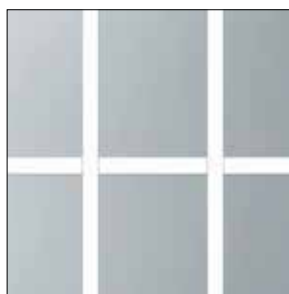
When function and budget matter, Clear glass, Clear glass with Grilles, Venting units and Mini Blinds are the primary choices. There are many selections to choose from including energy efficient Low-E.



**MINI BLINDS**  
View on pages 78-79



**VENTS**  
View on page 77



**GRILLES**  
View on pages 75



**CLEAR**  
View on page 75



*Black Grilles shown in 10 lite with matching sidelites.*

## Grilles Between Glass Clear Glass

Internal grilles provide the beauty of a true divided lite with ease of cleaning. Grilles are available in 5/8" width, flat profile, Low-E. For visualization, go to [madero.ca](http://madero.ca)



1/2 Lite



3/4 Lite



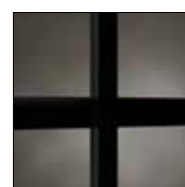
One Lite - 10



One Lite - 15



Grilles - White



Grilles - Black



## Clear

When you want the view and nothing else, clear glass is your answer. Partner with direct glazed sidelites and transom for a large window design. Available in Low E, Dual Low E Argon and Triple Low-E Argon.





Choose Your Door Glass

## Venting Inserts

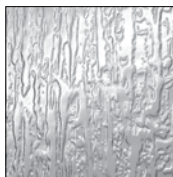
Vents allow for a boost of fresh air in workshops, garages, or your home. Ten adjustments allow you to control the flow of air. A durable UV-resistant moulded frame and removable screen ease cleanup.



### Glass options:



CLEAR LOW E



RAIN LOW E  
Only available 22" x 36"

### Available sizes:



**Mark-160**  
20" x 36"



**Mark-12**  
22" x 36"

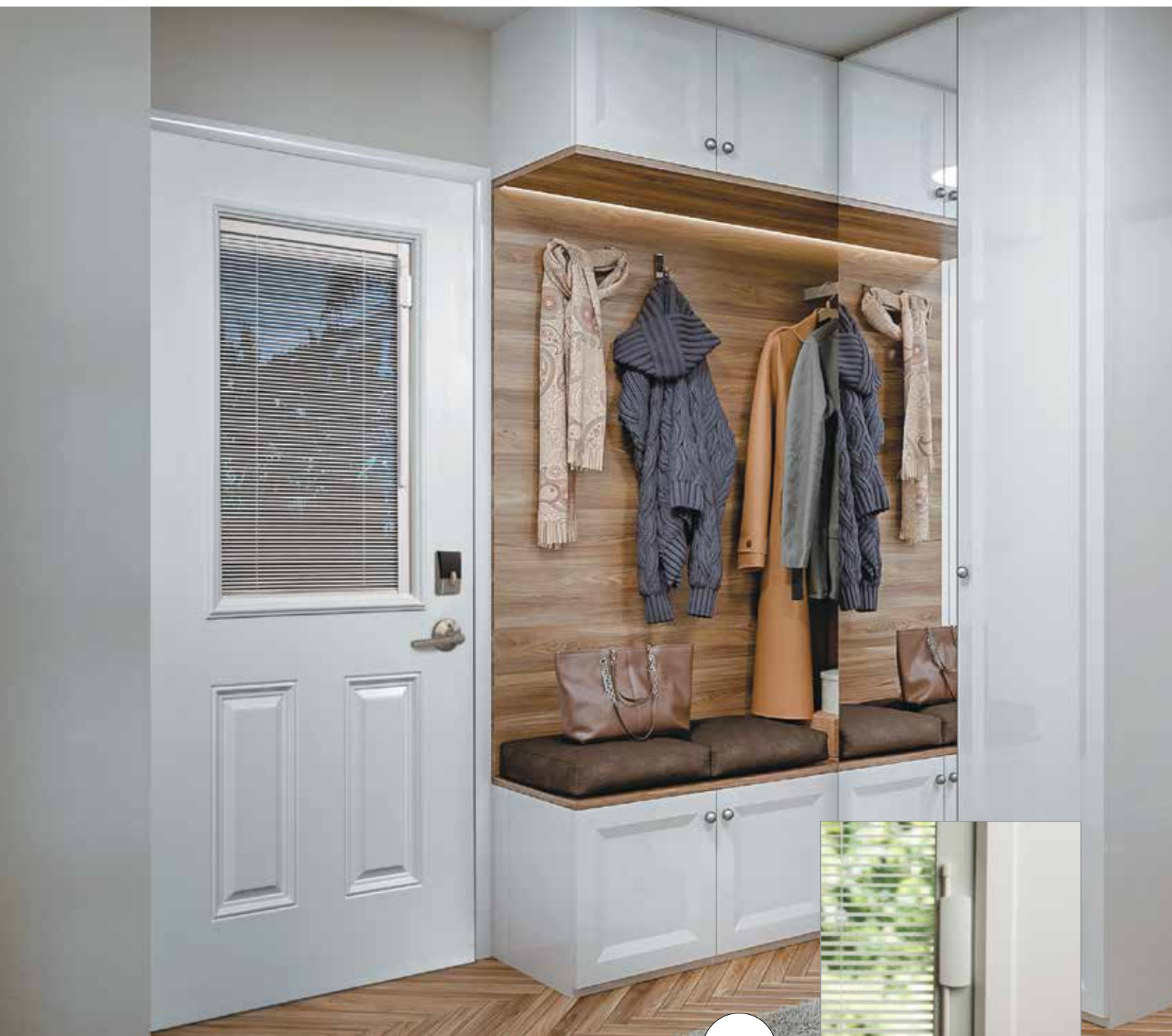


**Mark-120**  
20" x 64"



**Mark-122**  
22" x 64"

The Novatech Q550 Option+ is now available to qualify for the Energy Star certification. Ask your local sales agent.



White

## Enclosed Blinds

### Light Touch

The single operator lets you raise, lower or tilt the blinds in an easy, slight movement. Blinds adjust for complete light block, and the privacy channels on each side eliminate light gaps when the blinds are closed. Enclosed blinds are sealed tight to eliminate dusting.

Blind options are available in Low-E and Double Low-E to meet Energy Star 2024 certification.



*Enclosed blinds with Espresso*

## Coloured Enclosed Blinds Collection

The coloured collection features 4 different colours to choose from: Sand, Espresso, Slate Grey and Silver Moon to coordinate with any decor preference. This collection has the same great features as the Light Touch Mini Blinds.



22"x64", 20"x64"

22"x80", 20"x80"

22"x36", 20"x36"



Sand



Espresso



Slate Gray



Silver Moon



*Vog steel door painted Smokey Teal. Shown with  
Schlage Century Handleset and deadbolt in Aged Bronze.*



# Hardware

## Drilling Options

Choose your hardware from any selection of brand or style. Please specify at the time of ordering: single drill, double drill, mortise faceplate option, a modern pull with deadbolt or multi-point hardware. Pulls and multi-point are only available with a fiberglass door.

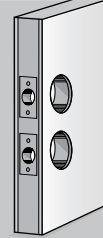
### Option 1: Single Drill

**Ideal for:**  
Single lever or knob  
style hardware.



### Option 2: Double Drill

**Ideal for:**  
Handleset, lever or knob  
with deadbolt hardware.



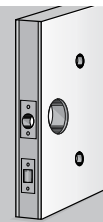
### Option 3: Multi-point Hardware for Single Door - Fiberglass only

Multiple locking points  
simultaneously latch into  
place through the action  
of a continuous drive rail,  
providing security to the  
perimeter of the door.



### Option 4: Deadbolt / Pull Option - Fiberglass only

European styling is  
achieved with a modern  
pull and deadbolt  
combination. The door  
system includes two  
architectural grade  
roller latches.



# Residential Hardware



## Schlage F-Series Handleset

- Designed to resist a variety of security attacks, including kick-ins, picking, and bumping
- Bottom grip features adjustable throughbolt with 1.5" of movement for flexible install and easy retrofit
- Latch components adjustable for 2-3/8" or 2-3/4" door preps
- Installation is a snap with posts that guide the screw into the proper location



**Addison (ADD)**  
619, 716 (shown)



**Camelot (CAM)**  
619 (shown), 716



**Century (CEN)**  
619 (shown)



**Greenwich (GRW)**  
619 (shown), 622



**Plymouth (PLY)**  
619 (shown), 626

## Schlage F-Series Handleset

- Designed to resist a variety of security attacks, including kick-ins, picking, and bumping
- Installation is a snap with posts that guide the screw into the proper location
- Fits all standard door preps, with lever designs reversible in-field



**Accent Lever (ACC)**  
Passage, Privacy, Keyed, Dummy (LH/RH)  
619, 716 (shown)



**Merano Lever (MER)**  
Passage, Privacy, Keyed, Dummy (LH/RH)  
619 (shown)



**Broadway Lever (BRW)**  
Passage, Privacy, Keyed (non-handed)  
619 (shown)



**Latitude Lever (LAT)**  
Passage, Privacy, Keyed (non-handed)  
619, 622 (shown)



**Latitude Lever with Century Rose (LAT/CEN)**  
Passage, Privacy, Keyed  
619 (shown)

### Available Finishes



619  
Satin Nickel



622  
Matte Black



626  
Satin Chrome



716  
Aged Bronze

To view Madero's full offering of Schlage products, visit [madero.ca](http://madero.ca)

# Residential Hardware

---

## Schlage Smart Locksets

Stop worrying about whether you've locked the front door before you left. With a Schlage smart lock, you can enjoy peace of mind and freedom from keys.

### Schlage Encode™ Deadbolt with Century & Camelot Escutcheon

Built-in WiFi allows you to lock/unlock from anywhere, no hub required.

---



Satin Nickel (619)



Matte Black (622)



Matte Black (622)



Aged Bronze (716)



Satin Nickel (619)

### Schlage Sense™ Bluetooth Deadbolt with Century Escutcheon

Designed to work with Bluetooth Smart technology

---



Satin Nickel (619)



Matte Black (622)

### Schlage Touch Deadbolt with Camelot & Century Escutcheon

Durable, fingerprint-resistant screen for added security and convenience.

---



Matte Black (622)



Satin Nickel (619)

### Schlage Touch Screen Lock with Camelot & Century Escutcheon

Durable, fingerprint-resistant screen, slim profile levers that are both strong and secure.

---



Aged Bronze (716)



Satin Nickel (619)





*3/4 Lite door with Clear glass. Shown with a custom handle, Schlage Sense bluetooth deadbolt and PanoLock+ Multi-Point lock system.*

# Multi-Point Hardware



PanoLock+ is a one-of-a-kind multi-point lock that works with most off-the-shelf lock hardware, supports a forgiving installation, and offers lasting performance, all at an affordable price point. Including electronic deadbolts.



### Choose your hardware.

Whether knob, lever, or thumbpress, PanoLock is compatible with most off-the-shelf hardware. Including electronic deadbolts.



### A multi-point lock for every budget.

Available at a more approachable price point so you can use PanoLock for more projects (and budgets).



### Smooth locking operation.

Supports a more forgiving install and smoother everyday use with tapered bolts and adjustable roller strikes.



### The strength and security of a multi-point lock.

Enjoy enhanced performance and security with three locking points.

### Faceplate Finishes



Bronze Anodized   Satin Nickel   White Anodized

### Adjustable Strike



Victorian Bronze   Satin Nickel   Bright Brass   Black   Stainless Steel

# Multi-Point Hardware

for Madero Single Door



## How Trilennium® Works

When activated, each Trilennium bolt becomes a true deadbolt that cannot be compromised.

One simple turn of the key or thumbturn engages all three bolts for perfect alignment and added performance.



With the panic release feature, just one turn of the lever disengages all three bolts at once for easy operation.

## Trilennium® Handset Collection



**Pinnacle Entry Set**



Victorian Bronze Satin Nickel Bright Brass



**Curved Entry Set**



Victorian Bronze Satin Nickel Black



**Horizon Entry Set**



Victorian Bronze Satin Nickel Bright Brass



**Rectangular Entry Set**



Victorian Bronze Satin Nickel Black



**Eclipse Entry Set**



Victorian Bronze Satin Nickel Bright Brass Black



**Eclipse Grip Set**



Victorian Bronze Satin Nickel Bright Brass Black



A stronger multi-point lock with I-Beam construction means ultimate peace of mind for you.



## Multi-Point Astragal

for Madero Garden Patio

The Endura multi-point astragal is used on all double-door Madero Garden Patio systems. Multi-point functionality is built right into the astragal, working with standard deadbolts for ultimate cost efficiency. Two locking points automatically engage when the door is locked to fight deflection. Astragal boot lifts clear of the sill when operating the inactive door panel, preventing rubbing, wear or damage. A built in flip lever locks and unlocks for enhanced accessibility.

### How the Multi-Point Astragal Works:

Engaging a standard deadbolt activates built-in locking mechanism.



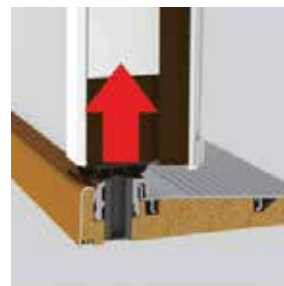
Built-in Lock Pawls engage with keepers in the active door.



Flip Lever locks and unlocks the astragal in one easy motion.



Flush Bolt and Floating Boot lift clear of the sill for damage free operation.





# Architecturally Designed Door Pulls

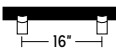
Three families of door pulls to choose from: SoftMet, NoirTek and MegaTek. Choose from a 16", 36", or 60" stainless steel door pull and then choose your locking hardware. All door pull systems are constructed with two architectural grade roller latches.

## NoirTek™ Collection

(Offset RM3940)

NoirTek's durable black hard coat anodized grip complements many design schemes and is an appealing finish on its own.

- 16" x 1-1/4" diameter straight or offset pull
- Black hard coat anodized grip, stainless steel mounts

Size: 

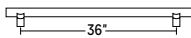
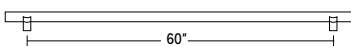


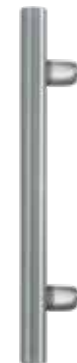
## MegaTek™ Collection

(Offset RM3311)

Ladder pulls are an artful and functional solution for a dramatic entrance design.

- 36" or 60" x 1-1/4" diameter offset pull
- Polished stainless steel



Sizes:   




## SoftMet™ Collection

(Offset RM2540)

- Durable, weather-resistant black Santoprene™ grip - a high performance engineered thermoplastic elastomer
- 16" x 1-1/4" diameter straight or offset pull or 36" x 1-1/4" diameter offset pull
- Stainless steel ends and mounts

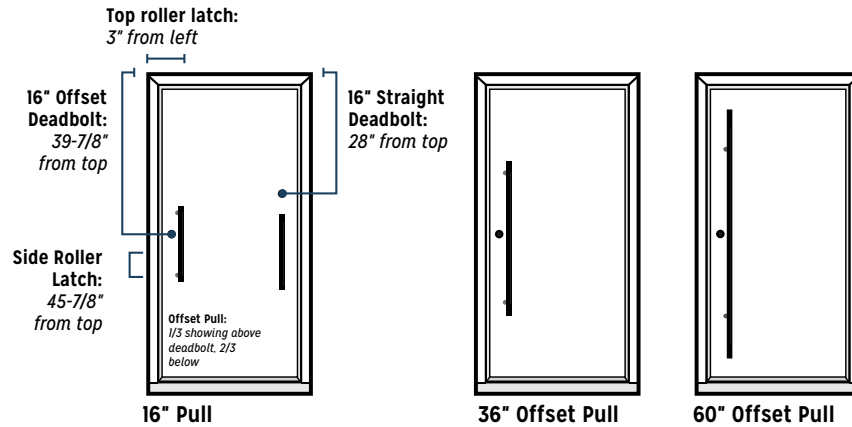
Sizes:   




# Architecturally Designed Door Pulls

## Door Pull Visualizer

### Determine Your Desired Product Style

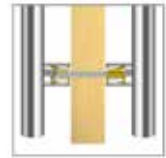


Offset pulls are designed to incorporate a deadbolt along the length of the pull, whereas a straight pull incorporates the deadbolt installation above the pull.

### Back-to-Back Mounting

Two door pulls are connected through the door, each pull opposite the other.

All Madero fiberglass slabs feature a full height lock block for lifelong performance.



*Disclaimer: All measurements are calculated from the top left of door slab. Some regions may require specific drill locations for deadlock options. Contact your local building inspector for more information.*

### Offset vs. Straight

Offset vs. straight is usually determined based on the aesthetics you are hoping to achieve, and the functionality required to ensure you have a product which meets your everyday needs.

Offset pulls are designed to incorporate a deadbolt along the length of the pull, allowing additional clearance when locking/unlocking the deadbolt, whereas a straight pull incorporates the deadbolt installation above the pull.

## Locking Hardware



### Roller Latch

RL30

- Maximum projection of the roller is 3/8\" allowing for variance in the door clearance
- Nylon roller standard
- Stainless steel construction



**IVES®**

#### Available Finishes:



**C-32D**  
Stainless Steel



**C-10B**  
Oil Rubbed Bronze

**Note:** Some regions may require a double latching system to meet local building codes. Contact your local building inspector for more information.

### High Security Mortise

L460P



- High security mortise lock
- Minimalistic cylinder for architectural or European design
- Solid stainless and brass components
- The best in traditional keyed entry locks
- 3 year limited manufacturer's warranty
- Exceeds Grade I testing

#### Available Finishes:



**ALLEGION™**



**626**  
Satin Chrome



## Fiberglass Slabs

### Neulite Flush Glazed SG10

With simple and aesthetically clean glass beadings, Neulite Flush Glazed doors are designed to complement today's contemporary home decors. The smooth white shaker-style beading allows for a 1" standard glass thickness and all standard size glass inserts, whether decorative, privacy, textured or completely clear. They can be used as an elegant front entrance or an escape to a backyard garden oasis.



Smooth White Neulite Detail

## Fiberglass | Steel Slabs

### Flush Doors with Insert SG00 | WG00 | ED00

The 24 gauge steel or fiberglass slab is cut out in manufacturing to accept the glass of your choosing.

ODL Doorglass is available with the Evolve Frame, with certain designs also using the Urban or Executive option.



Evolve® High Performance Frame

Executive PVC Frame



Interior



Exterior

Urban PVC Frame



Interior



Exterior

Novatech glass is available in either the PVC or Contemporary Frame



NovaPVC



Stainable  
NovaPVC



Contemporary

# Door Slabs

## Fiberglass

25 **YEAR**  
Limited  
Manufacturer's  
Warranty

**BUILT FOR THE**  
Canadian Climate



### Exceptional Security

Our full length steel reinforced wood lock block offers exceptional security while allowing a range of hardware mounting options.

### Energy Efficiency

Filled with an insulating core of 100% CFC-free polyurethane foam, providing an excellent R rating, while bonding the two door skins together.

### Performance

Rigid structure prevents bowing and warping in extreme temperatures. The fiberglass skins are resistant to dents, dings, splintering, and corrosion. They are very easy to keep clean.

### Completely Waterproof

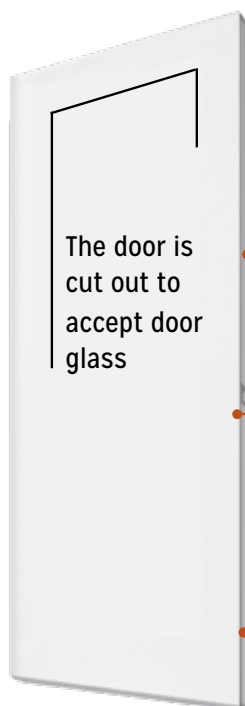
Our full length composite stiles and rails provide complete waterproofing for the door's insulation. The composite materials will not splinter or delaminate and boasts twice the screw holding capacity of wood-edge doors.

## Steel Slabs

**Novatech**

10 **YEAR** Limited  
Manufacturer's  
Warranty

A popular choice for Canadian home buyers, our 24 gauge steel doors feature triple shadowed panel embossments for greater detail. The white N600 Polytex finish carries a 10 year warranty, with the smooth, ready to paint finish ready to accept the paint color of your choosing.



### Durability

Door skins interlock with the stile, providing additional support to reduce delamination and stretching.

### Strength and Security

16" wood lock block provides strength and security while accommodating double bore lockset/deadbolt.

### Energy Efficient

Filled with an insulating core of 100% CFC-free polyurethane foam, providing better energy ratings than a standard styrene core product.

## Pre-Finishing Options

### Smooth or brushed white

pre-pigmented fiberglass doors have a warm white finish to match the composite frame and require no painting. The doors will accept an array of paint colours to match the decor of your home.

To achieve desired finish, woodgrain textured fiberglass doors require paint or stain.

**Steel doors** are supplied with a N600 Polytex finish, requiring no additional paint to achieve a 10 year limited warranty. Polytex white is cool white while Madero's composite frames are warm white. To achieve a uniform appearance, painting will be required.



# Door Frame Specifications



## Brickmould Options

### 5/8" Slimline Aluminum

5/8" Slimline aluminum brickmould comes standard with an integral nailing fin and is versatile for both renovation and new construction.



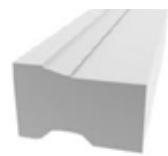
Black



Pure White

### #180 Step

Standard option is wood or composite #180 step brickmould. Snaplock nailing fin is added on all composite units.



### SnapLock Nailing Fin (Composite only)

Incorporating a hinge-style design, Madero's SnapLock nailing fin snaps into place for new home construction or can be scored and trimmed if not required.

## Jamb Options

Madero Artisan door frame systems are constructed of wood or composite jamb - smooth white or textured. Available in jamb depth of 4-9/16", 6-9/16", 8-9/16" or custom.



### Wood

Kiln dried, primed finger-joint pine—double primed for quality performance and ease of painting. Wood frame requires paint on all exposed surfaces within 45 days of purchase.



### Composite

- Woodgrain textured or pre-pigmented smooth white frame components are a blend of PVC and wood fiber composite substrate.
- Composite will not discolour, absorb moisture, splinter or rot.
- Smooth white composite does not require paint while woodgrain composite is supplied in its raw almond finish, requiring paint or stain to achieve a realistic, rich appearance.
- Limited life time warranty.



# Door Frame Specifications



## Z-Series Inswing Articulating Sill® and Sealing System

- **Superior Performance**

Z-AC cap sill never needs adjustment, automatically adjusting for a lasting seal against leak and air infiltration.

- **Sealing System**

Gaskets are provided to give an additional seal and to eliminate caulking. Matching corner pads are factory installed to seal out air and moisture. Compression weatherstrip seals tight when the door is closed and expands when open. The Z-AC door bottom is adhered to the door forming a tight seal every time.

- **Additional Protection**

Sills are provided with sill and cap covers to prevent damage during installation.



### CERTIFIED & TESTED

To meet the stringent NAFS requirements for doors in a new home construction, all Endura door components are certified and tested.



### Z-AC Door Bottom

The Z-AC Door Bottom delivers enhanced protection against air and water infiltration, forming a tight seal every time. Z-AC Door Bottoms seal without caulk for easy assembly and lasting performance.



### Simple Solutions® Corner Pad Weatherstripping

The Simple Solution Corner Pad seals out air and moisture. Compression weatherstrip seals tight when the door is closed and expands when opened, providing a long-lasting weather tight solution.



### Z-Series Inswing Articulating Sill®

Madero Artisan door systems are provided with black caps and black anodized sill decks.



### Z-Series Outswing Bumper Sill®

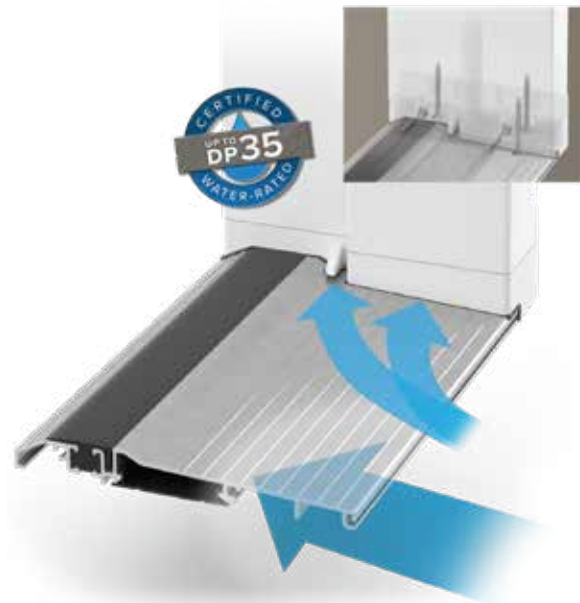
Madero Artisan door systems are provided with black caps and black anodized sill decks.





## ADaptive Sill System

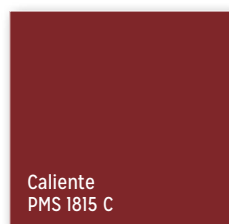
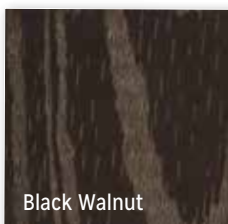
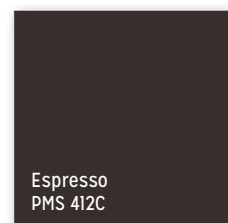
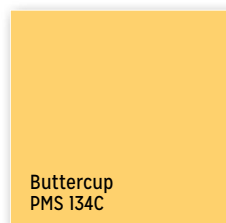
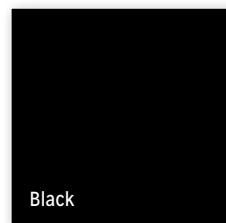
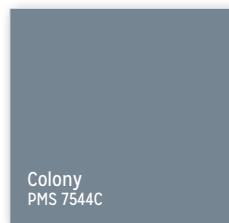
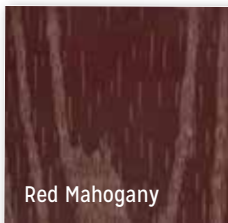
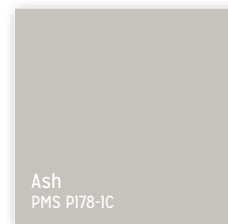
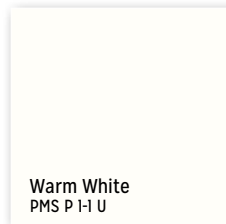
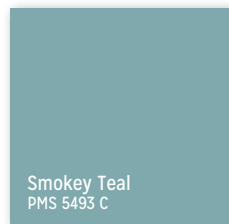
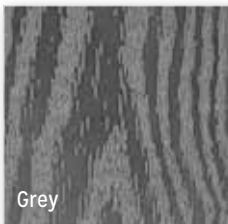
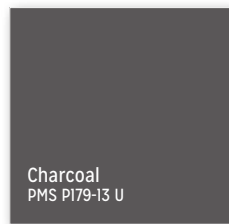
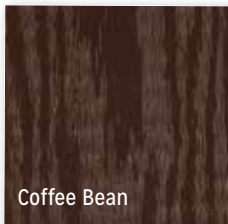
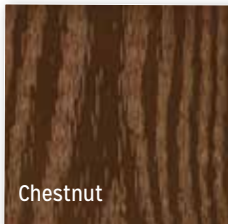
Low profile access provides an ease of mobility for wheelchairs. The thermal break in the sill deters frost buildup. An innovative jamb boot supports a weather-tight seal and secure corner assembly. Full length caulking strip eliminates water penetration.





*Garden Venting Patio Doors painted Black with fixed panels installed with Clear glass. Shown with Schlage Accent Lever in Satin Nickel.*

# Pre-Finishing Options



Madero has identified and selected some of the more popular paint and stain colours. Streamline the colour matching process for your project by selecting from Madero's popular colour choices.

**Steel doors** are supplied with a polytex finish. Painting is not required, however, the door will accept an array of paint colours to match your home.

**Smooth white** fiberglass doors are supplied in natural pre-pigmented warm white finish. Painting is not required, however, the door will accept an array of paint colours to match your home.

**Woodgrain** fiberglass doors are supplied with factory almond finish, requiring paint or stain.

**For dark** coloured finishes, heat reflective paint is required to achieve a full warranty.

*Printed swatch colours may vary slightly from actual product. If you are concerned about exact colour match, we recommend you first request a product sample for accuracy.*

*Option to paint one side is available. Specify at time of ordering. Split finish option also available.*

# Garden Patio Product Measurements

## Finished Frame Widths

SINGLE HINGED	Net Frame Width	DOUBLE HINGED	Net Frame Width	GARDEN VENTING	Net Frame Width
2/6 + 2/6	63"	2/6 + 2/6	62 1/4"	2/6 + 2/6	63"
2/8 + 2/8	67"	2/8 + 2/8	66 1/4"	2/8 + 2/8	67"
2/10 + 2/10	71"	2/10 + 2/10	70 1/4"	2/10 + 2/10	71"
3/0 + 3/0	75"	3/0 + 3/0	74 1/4"	3/0 + 3/0	75"

\* 8/0 height is only available in a fiberglass door and composite frame option.  
\* Renovator Garden Doors are available in steel doors and wood frame option. Refer to the Entry Garden Door Program.  
\* Garden Venting in 6/8 outswing only.

## Finished Frame Heights

INSWING	Net Frame Height
6/8	81 3/4"
8/0	97 3/4"

OUTSWING	Net Frame Height
6/8	80 3/4"
8/0	96 3/4"

## Rough Opening Measurements (RO)

Add 1" to width of net frame  
Add 1/2" to height of net frame  
  
For 14" transom, add 15-3/4" to height of net frame.

## Outside Measurements of Brickmould (OSM)

**180 Step Brickmould:** Add 2-1/2" to width of net frame  
Add 1-1/4" to width of net frame  
  
**Slimline Aluminum Brickmould:** No change to net frame height or width



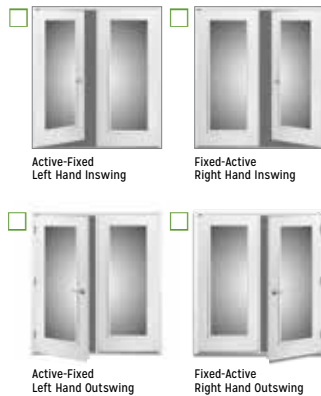
# Ordering Checklist

## STEP 1

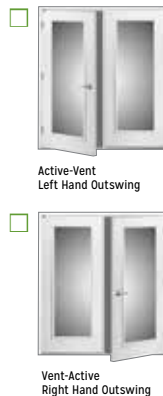
Configuration Options

Choose garden patio door system configuration (viewed from exterior)

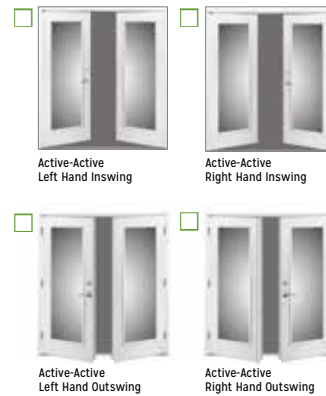
### Single Hinged Options:



### Venting:



### Double Hinged Options:



### Single Hinged & Venting Options: ACTIVE DOOR



### Double Hinged Options: ACTIVE DOOR



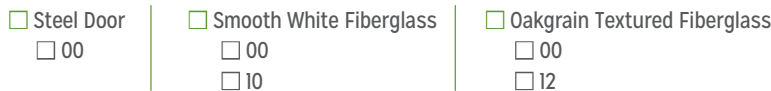
### INACTIVE DOOR



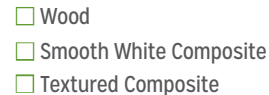
## STEP 2

Product

Choose door/frame pairing: *flush slab with insert (00) or Neulite (SG10, WG12)*



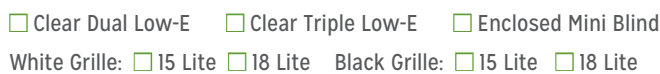
Choose Frame:



## STEP 3

Glass Options

Choose door lite glass:



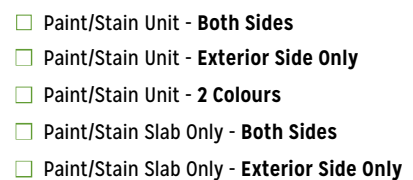
If transom required:



## STEP 4

Pre-finishing Options

Stain or Paint Options: *(Stain only available in textured fiberglass.)*



## STEP 5

Determine Specifications

Choose door size:



Height: ☐ 6/8

☐ 8/0 (Not available in Venting)

Choose jamb depth:



Default brickmould: 180 step



Aluminum Sill: Bronze Anodized

☐ **Sash Locks on active door**

Specify your hinge finish:



Customer Signature: \_\_\_\_\_ Date: \_\_\_\_\_

Store Name of #: \_\_\_\_\_ Tag: \_\_\_\_\_ PO: \_\_\_\_\_


While Madero makes every effort to ensure the information contained in this brochure is accurate, we do not accept liability for any inaccuracies. This brochure is subject to change, as well as errors and omissions, without notice or liability. Doors are provided unfinished/unstained and without hardware unless otherwise noted. All photos are for illustration purposes only and depicted doors and frames may not represent Madero products.

# Artisan Product Measurements


## Finished Frame Widths

Artisan Series doors are available in 2/8, 2/10, 3/0, and 3/6 widths—as noted in design specifications—with 2x4 (4 9/16"), 2x6 (6 9/16"), 2x8 (8 9/16") or custom, jamb construction , left hand or right hand application, and inswing or outswing. **Door dimensions are based on a 14" height rectangular transom and a 12" or 14" sidelite.**


### SINGLE DOOR (D) UNIT SIZING

	Net Frame Width	
	2/8	33 1/2"
	2/10	35 1/2"
	3/0	37 1/2"
	3/6	43 1/2"

### SIDELITE-DOOR (SD) UNIT SIZING

	Net Frame Door with 12" Sidelite		Net Frame Door with 14" Sidelite	
	2/8	46 7/8"	2/8	48 7/8"
	2/10	48 7/8"	2/10	50 7/8"
	3/0	50 7/8"	3/0	52 7/8"
	3/6	56 7/8"	3/6	58 7/8"

### SIDELITE-DOOR-SIDELITE (SDS) UNIT SIZING

	Net Frame Door with 2 - 12" Sidelites		Net Frame Door with 2 - 14" Sidelites	
	2/8	60"	2/8	64"
	2/10	62"	2/10	66"
	3/0	64"	3/0	68"
	3/6	70"	3/6	74"

## Finished Frame Heights (all systems)

6/8 Inswing – Finished Frame Height: 82"

6/8 Outswing – Finished Frame Height: 81"

8/0 Inswing – Finished Frame Height: 98"

8/0 Outswing – Finished Frame Height: 97"

## Rough Opening Measurements

To calculate rough opening, add 1" to width and add 1/2" to height of net frame.

### Rough Opening Measurements to Include Transom

For all transoms, add 15-3/4" to height of net frame.

For decorative transoms, add 3/4" to width.

### OSM Brickmould

**180 Step Brickmould:** Add 2-1/2" to width of net frame

Add 1-1/4" to width of net frame

**Slimline Aluminum Brickmould:** No change to net frame height or width



Inswing – Right Hand  
View from outside of home.



Outswing – Right Hand  
View from outside of home.

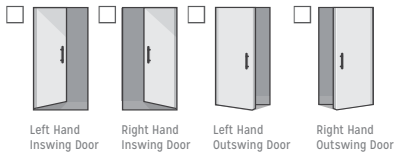
# Ordering Checklist

ARTISAN  
DOORS

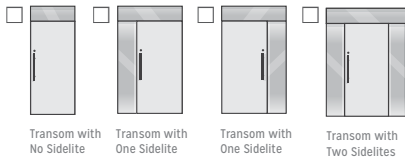
## STEP 1

Configuration  
Options

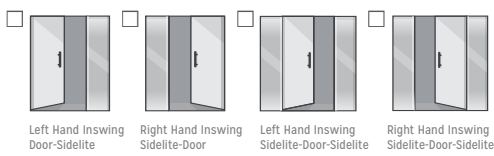
### Single:



### Transom



### Single Door with Sidelites:



### Door Design:

Reference page # \_\_\_\_\_

## STEP 2

Product

### Door Model #:

☐ Steel \_\_\_\_\_

☐ Fiberglass \_\_\_\_\_

### Frame:

☐ Wood \_\_\_\_\_

☐ Smooth White Composite \_\_\_\_\_

☐ Textured Composite \_\_\_\_\_

## STEP 3

Choose Your  
Glass

**Door Glass:** Please Specify \_\_\_\_\_

**Sidelite Glass: DIRECT GLAZED** ☐ Clear Low-E ☐ Frosted (Transclear Low E) ☐ Other (Please Specify) \_\_\_\_\_

*Note: Pricing is the same for 12" and 14" panelled sidelites. Limited models are available in 12", confirm with a sales agent.*

**SIDELITE PANEL SIZE:** ☐ 12"(full only) ☐ 14"

**SIDELITE PANEL:** ☐ Full Lite (Please Specify) \_\_\_\_\_ ☐ 1/2 Lite (Please Specify) \_\_\_\_\_

☐ 3/4 Lite (Please Specify) \_\_\_\_\_ ☐ Clear Low E \_\_\_\_\_

**TRANSOM GLASS:** ☐ Clear Low E

## STEP 4

Determine  
Specifications

**Choose Door Size: Width:** ☐ 2/8 (32") ☐ 2/10 (34") ☐ 3/0 (36") ☐ 3/6 (42") | **Height:** ☐ 6/8 (80") ☐ 8/0 (96") select designs only

### Choose Jamb Depth:

☐ 4-9/16" ☐ 6-9/16" ☐ 8-9/16" ☐ Other \_\_\_\_\_

### Choose Brickmould: (Default 180 step)

☐ 180 Step Brickmould ☐ White Slimline Brickmould ☐ Black Slimline Brickmould

## STEP 5

Hardware  
Preparation  
Options



### Single Drill

**Ideal for:**  
Single lever or knob  
style hardware.



### Double Drill

**Ideal for:**  
Handleset, lever or  
knob with deadbolt  
hardware.



### Deadbolt / Pull Option

European styling is achieved  
with a modern pull and deadbolt  
combination. Includes two  
architectural grade roller latches.



### Multi-Point

Multi-point hardware is designed  
to lock at several points  
throughout the height of the door,  
making the lock side of the door as  
secure as the hinge side.

### Hinge Finishes



☐ C-26  
Zinc Plated



☐ C-4  
Brushed  
Brass



☐ C-10B  
Oil Rubbed  
Bronze



☐ C-26D  
Brushed  
Chrome



☐ C-1D  
Matte Black

### Multi-Point:

Design: \_\_\_\_\_ Finish: \_\_\_\_\_

**Aluminum Sill:** Bronze Anodized

## STEP 6

Pre-finishing  
Options

**Stain or Paint Options:** (Stain only available in textured fiberglass.)



☐ Red  
Mahogany



☐ Walnut



☐ Black  
Walnut



☐ Coffee  
Bean



☐ Chestnut



☐ Grey



☐ Espresso



☐ Black



☐ Cadet Navy



☐ Charcoal



☐ Stone



☐ Ash



☐ Colony



☐ Smokey Teal



☐ Melon



☐ Tangerine



☐ Buttercup



☐ Caliente



☐ Warm White

☐ Paint/Stain Unit - **Both Sides**

☐ Paint/Stain Unit - **Exterior Side Only**

☐ Paint/Stain Unit - **2 Colours**

☐ Paint/Stain Slab Only - **Both Sides**

☐ Paint/Stain Slab Only - **Exterior Side Only**

Customer Signature: \_\_\_\_\_ Date: \_\_\_\_\_

Store Name or #: \_\_\_\_\_ Tag: \_\_\_\_\_ PO #: \_\_\_\_\_

While Madero makes every effort to ensure the information contained in this brochure is accurate, we do not accept liability for any inaccuracies. This brochure is subject to change, as well as errors and omissions, without notice or liability. Doors are provided unfinished/unstained and without hardware unless otherwise noted. All photos are for illustration purposes only and depicted doors and frames may not represent Madero products.



**Madero Exterior Doors** are manufactured in Western Canada and can be purchased through our dealer network. Madero is a leader in the use of fiberglass and steel doors in wood or composite frames. We fabricate several lines of door systems, with quality craftsmanship being our focus for every door we build.



Entry Doors



Garden Patio Doors



Interior Doors



Multi-Family



Larson Product Catalogue



Commercial

Contact us at:

madero.ca | canada.orders@madero.ca | 1.800.667.6977

  @maderocanada

Printed & designed by

 **TWO SIX**  
CREATIVE

MAD078-23-R